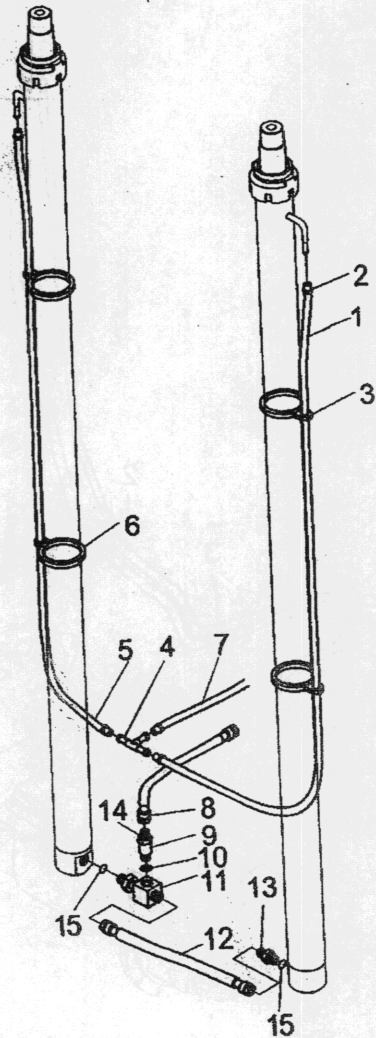


门架管路系统(基本型)/HYDRAULIC SYSTEM MAST(NORMAL MAST M)

FD10,15,18(T)-MW  
 FD10,15,18(T)-MG  
 FG(L)10,15,18(T)-MG  
 FG(L)10,15,18(T)-MW



序号 Item No	图号 Part No	零部件名称 Description	件数 Q'ty	备注 Remark
A	M1537600000	Mast hydraulic system	1	门架管路系统
01	M3037600018	Plastic hose	1	塑料回油管
02	JK-10-16	Clip	6	夹箍10-16
03	-	Band	4	扎带
04	M3037604000	Three way	1	升降缸回油接头
05	M3037600025	Plastic hose	1	塑料回油管
06	-	Clip	4	扎带
07	M3037600026	Plastic hose	4	塑料回油管
08	M3004305005	Hose H.P.	1	高压胶管 $\phi 13 \times 630$
09	XSF-F16L-1.5T	Flow regulator	1	限速阀
10	JB982-77	Washer	1	组合垫圈22
11	M3037600027	Three way(Inc.15)	1	三通接头(包括15)
12	M1677610017	Hose H.P.	1	高压胶管
13	M3037600020	Through type connector(Inc.15)	1	直通接头
14	M3037600028	Connector	1	过渡接头
15	GB1235-76	O-ring	2	O型密封圈22 x 2.4



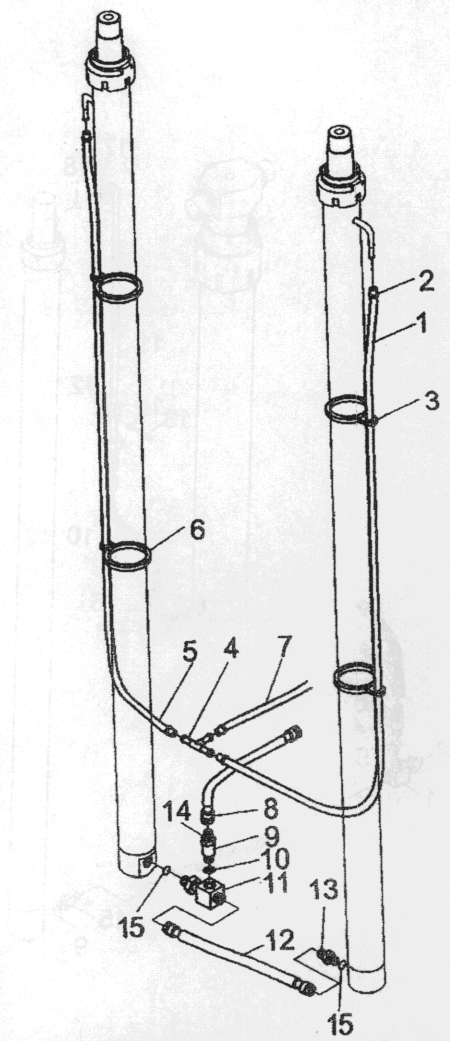


门架管路系统(基本型)/HYDRAULIC SYSTEM MAST(NORMAL MAST M)

管路系统选用件 Mast Piping Optional Parts

起升高度 LIFTING HEIGHT	件5塑料回油管长度 PLASTIC HOSE	件1塑料回油管长度 PLASTIC HOSE	备注 Remark
2000	1000	800	
2500	1250	1000	
2700	1350	1100	
3000	1500	1200	
3300	1650	1400	
3500	1750	1500	
3700	1850	1600	
3800	1900	1650	
4000	2050	1800	
4250	2150	1900	
4500	2300	2100	
4750	2450	2200	
5000	2550	2300	
5500	2850	2600	
6000	2100	2900	

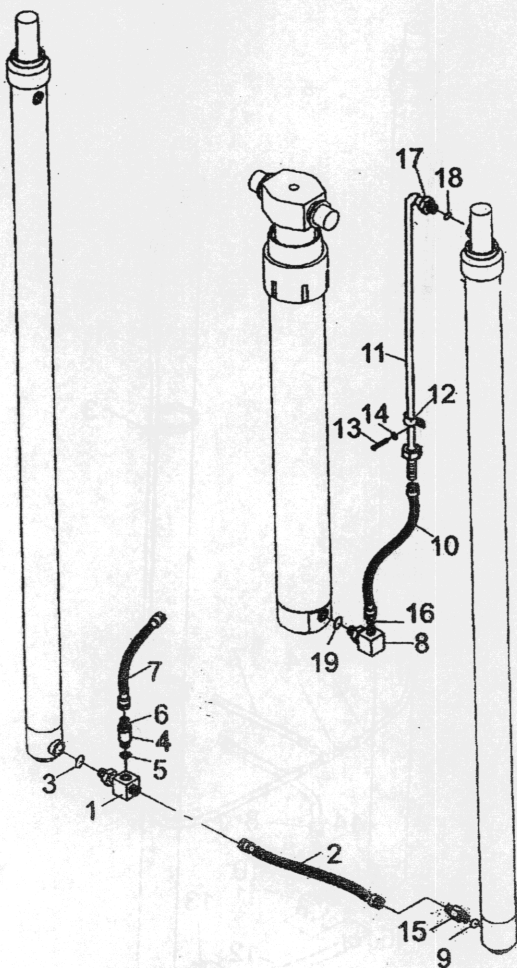
FD10,15,18(T)-MW  
 FD10,15,18(T)-MG  
 FG(L)10,15,18(T)-MG  
 FG(L)10,15,18(T)-MW





门架管路系统(二级全自由)/HYDRAULIC SYSTEM MAST(FULL FREE 2-STAGE MAST ZM)

FD10,15,18(T)-MW  
 FD10,15,18(T)-MG  
 FG(L)10,15,18(T)-MG  
 FG(L)10,15,18(T)-MW



序号 Item No	图号 Part No	零部件名称 Description	件数 Q'ty	备注 Remark
A	M1504300000	Mast hydraulic system 门架管路系统	1	
01	M3037600027	Three-way(Inc.03) 三通接头	1	
02	M3004305006	Hose H.P. 高压胶管 φ13 II	1	
03	GB1235-76	O-ring seal O型密封圈22×2.4	1	
04	XSF@16L-1.5T	Flow regulator 限速阀	1	
05	JB982-77	Washer 组合垫圈22	1	
06	M3037600030	Connector 过渡接头	1	
07	M3004305005	Hose H.P. 高压胶管 φ13 II × 500	1	
08	M3004305007	Through type connector 直通接头	1	
09	JB982-77	Washer 组合垫圈27	1	
10	M3004305004	Hose 胶管接头 φ13 II	1	
11	M2004300701	Steel pipe ass'y 钢管总成	1	
12	M3004305003	Clip 管夹	2	
13	GB5783-86	Bolt 螺栓M8×16	2	
14	GB93-87	Washer,lock 垫圈8	2	
15	M3004305001	Through type connector(Inc.19) 直通接头	1	
16	GB1235-76	O-ring O型密封圈16×2.4	1	
17	M3037600020	Through type connector 接头	1	
18	GB1235-76	O-ring O型密封圈24×2.4	1	
19	GB3452.1-86	O-ring O型密封圈28×3.1	1	



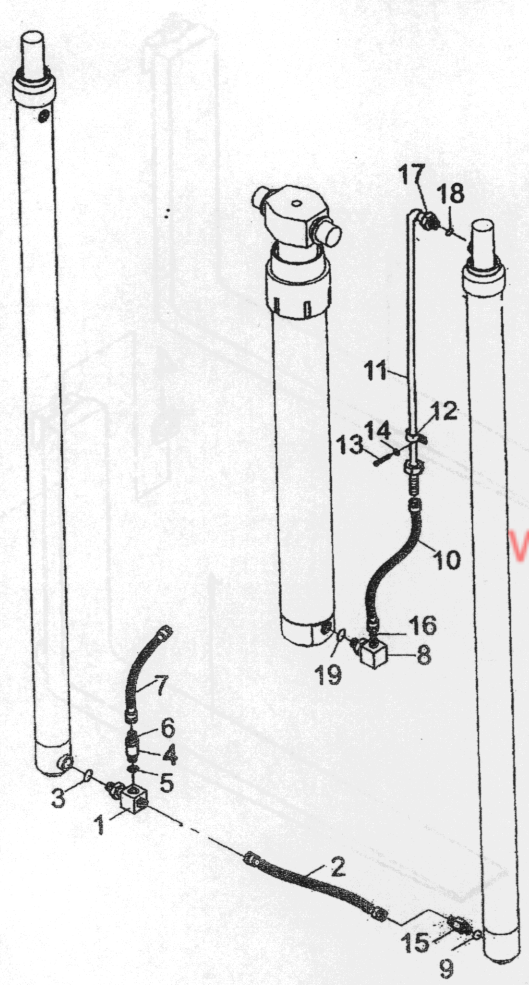


门架管路系统(二级全自由)/ HYDRAULIC SYSTEM MAST(FULL FREE 2-STAGE MAST ZM)

门架管路选用件(二级全自由门架) MAST PIPE-LINE SYSTEM(FULL FREE 2-STAGE MAST)

起升高度 LIFTING HEIGHT	门架管路系统 HYDRAULIC SYSTEM	钢管 HOSE	备注 Remark
	1-1.8t	1-1.8t	
2000	M2504 -60501	M2504 -60201	
2500	-60511	-60211	
2700	-60521	-60221	
3000	-60531	-60231	
3300	-60541	-60241	
3500	-60551	-60251	
3700	-60561	-60261	
4000	-60571	-60271	
4250	-60581	-60281	
4500	-60591	-60291	
4750	-60601	-60301	
5000	-60611	-60311	
5500	-60621	-60321	
6000	-60631	-60331	

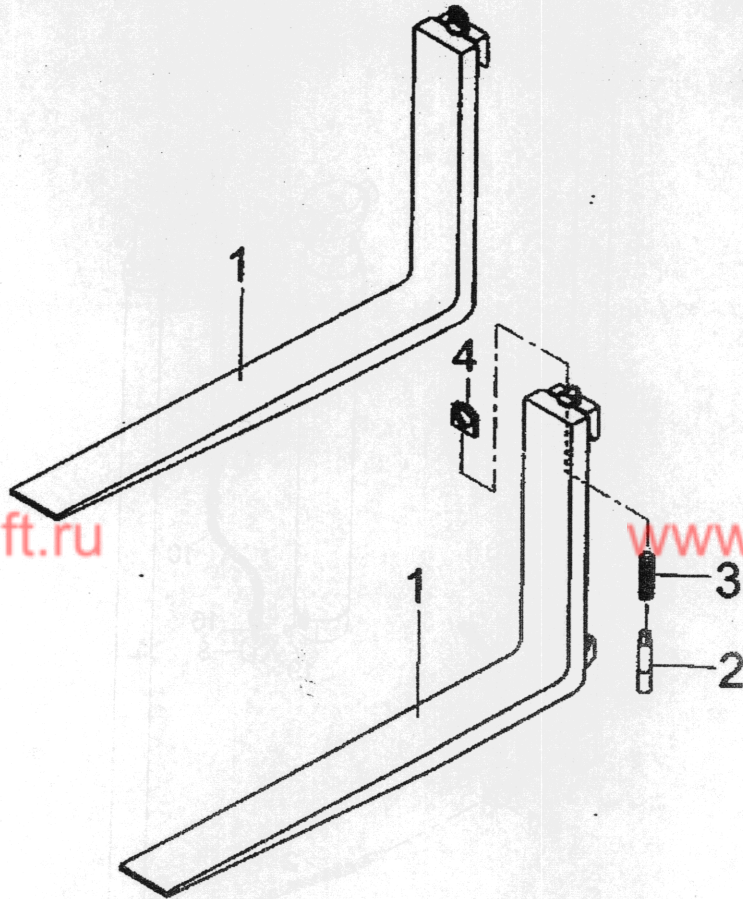
FD10,15,18(T)-MW  
 FD10,15,18(T)-MG  
 FG(L)10,15,18(T)-MG  
 FG(L)10,15,18(T)-MW





FD10,15,18(T)-MW  
 FD10,15,18(T)-MG  
 FG(L)10,15,18(T)-MG  
 FG(L)10,15,18(T)-MW

序号 Item No	图号 Part No	零部件名称 Description	件数 Qty	备注 Remark
01	M1538030000	Fork ass'y(Inc.2-4) 货叉总成(包括2-4)	1	
02	M2038050001	Positioning pin 定位销	2	
03	M2038050002	Spring 弹簧	2	
04	M3038050003	Handle 把手	2	



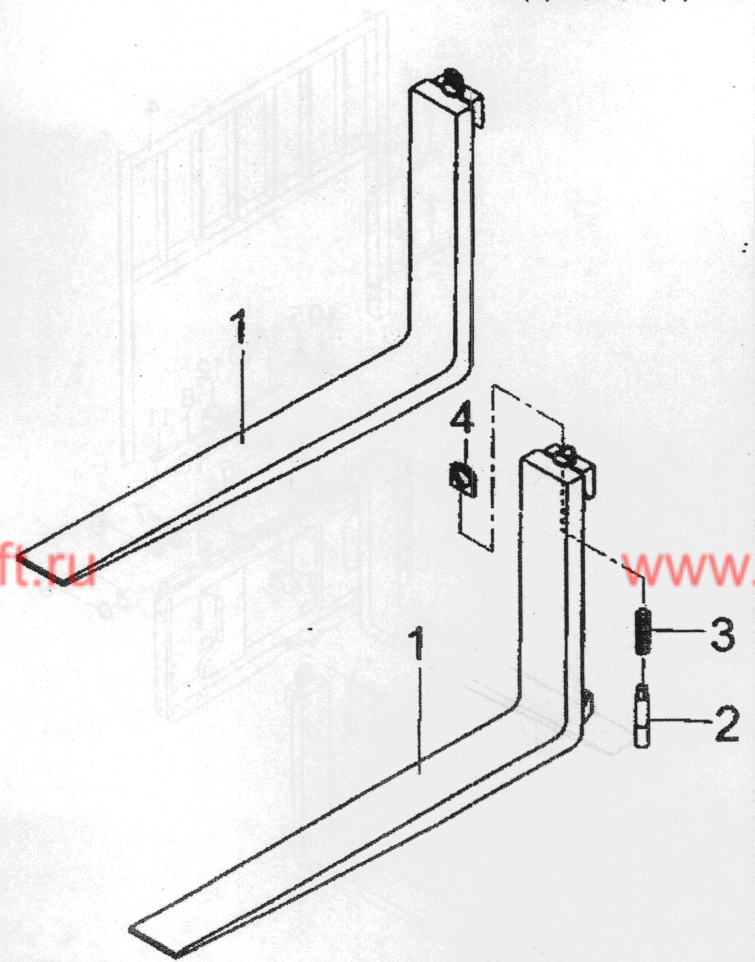


货叉(基本及二级全自由)/FORK(NORMAL & FULL FREE 2-STAGE MAST M & ZM)

货叉选用件表 Fork optional parts

型式 MODEL	长度 LENGTH	货叉总成代号 PART number	备注 Remark
1~1.8t		1~1.8t	
LF92-14A	920	M1593092000	
LF107-14A	1070	M1593107000	
LF122-14A	1220	M1593122010	
LF137-14A	1370	M1593137010	
LF152-14A	1520	M1593152010	
LF167-14A	1670	M1593167010	
LF182-14A	1820	M1593182010	

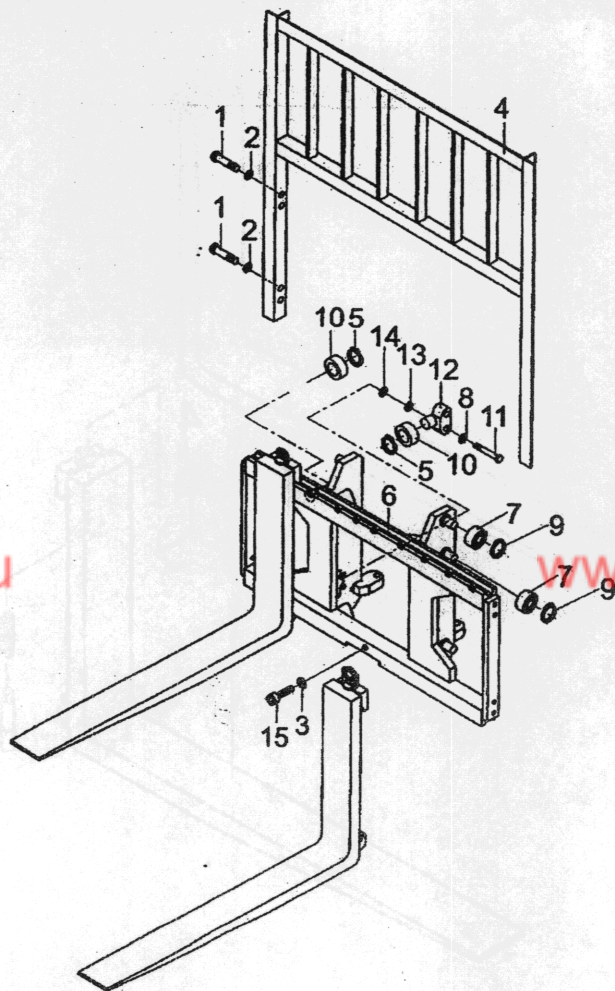
FD10,15,18(T)-MW  
 FD10,15,18(T)-MG  
 FG(L)10,15,18(T)-MG  
 FG(L)10,15,18(T)-MW



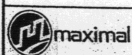


货叉架(基本)/LIFT BRACKET (NORMAL MAST M)

FD10,15,18(T)-MW  
 FD10,15,18(T)-MG  
 FG(L)10,15,18(T)-MG  
 FG(L)10,15,18(T)-MW



序号 Item No	图号 Part No	零部件名称 Description	件数 Q'ty	备注 Remark
01	GB5783-86	Bolt	螺栓M14×30	8
02	GB93-87	Washer,lock	垫圈14	8
03	GB93-87	Washer,lock	垫圈12	1
04	M1538002000	Backrest	挡货架	1
05	GB894-86	Snap ring	挡圈25	4
06	M1538005000	Lift bracket	货叉架总成	1
07	GB93-87	End roller	主滚动轮	6
08	GB894.1-86	Washer,lock	垫圈16	4
09	GB894.1-86	Snap ring	挡圈55	6
10	M1538005001	Spacing roller	限位滚轮	4
11	GB894.1-86	Bolt	螺栓M16×45	4
12	M1538005002	Shaft,spacing roller	限位滚轮轴	2
13	M1538005003	Washer	垫圈	AR
14	M1538005004	Washer	垫圈	AR
15	GB70-85	Screw	螺钉M12×20	1

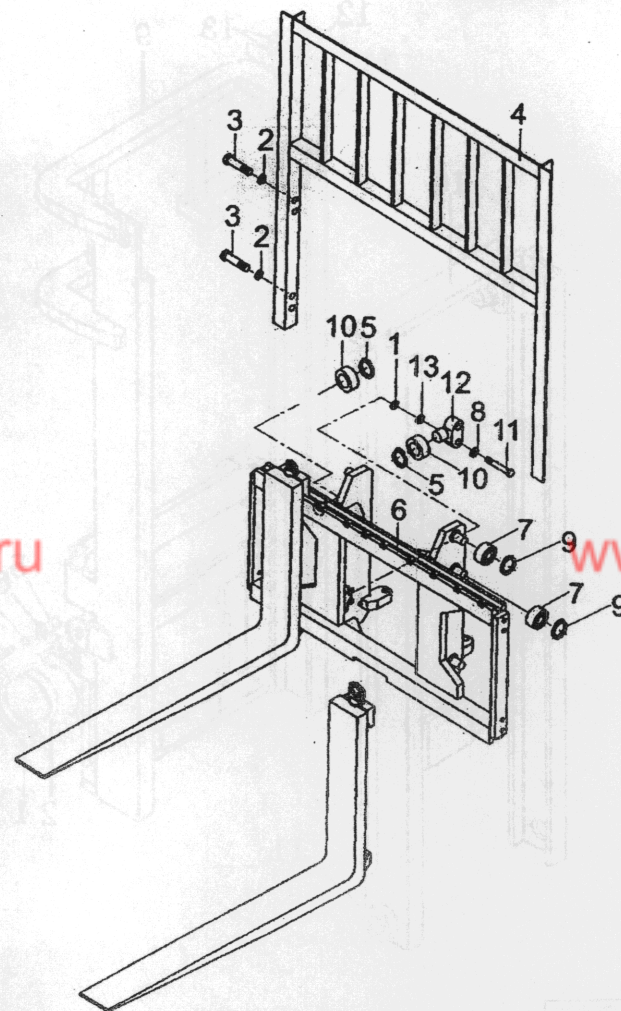




货叉架(二级全自由)/LIFT BRACKET (FULL FREE 2 STAGE MAST ZM)

序号 Item No	图号 Part No	零部件名称 Description	件数 Q'ty	备注 Remark
01	M1538050004	Washer	垫圈 12	
02	GB93-87	Washer,lock	垫圈14 8	
03	GB5783-86	Bolt	螺栓M14×30 8	
04	M1538002000	Backrest	挡货架 1	
05	GB894.1-86	Snap ring	挡圈25 4	
06	M1538050000	Lift bracket	货叉架 1	
07	M3038050006	End roller	主滚轮 6	
08	GB93-87	Washer,lock	垫圈16 4	
09	GB894.1-86	Snap ring	挡圈55 6	
10	M1538050001	Spacing roller	限位滚轮 4	
11	GB5783-86	Bolt	螺栓M16×40 4	
12	M1538050002	Shaft,spacing roller	限位滚轮轴 2	
13	M1538050003	Washer	垫圈 32	

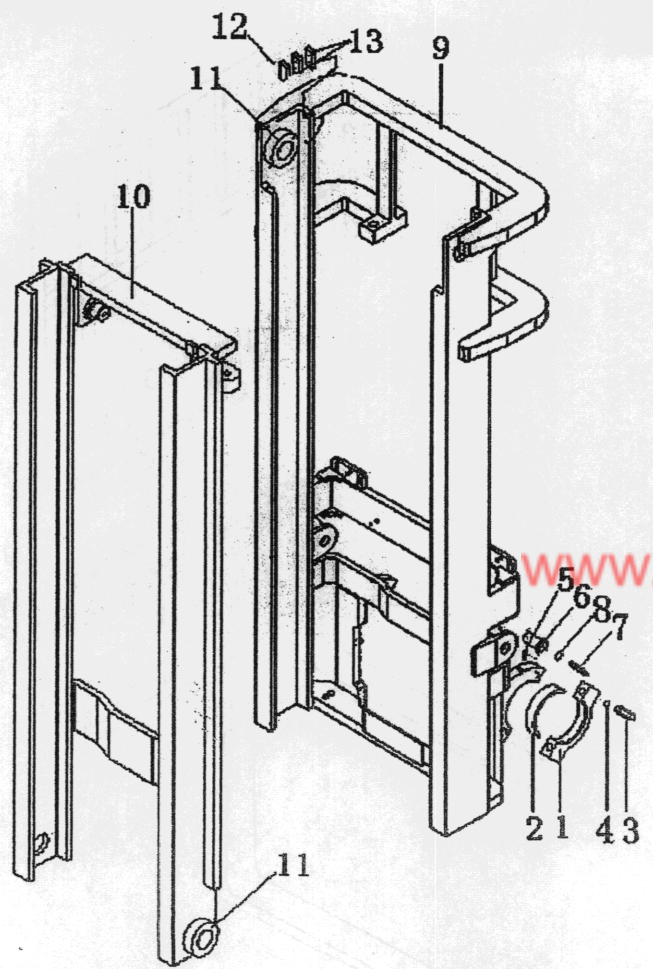
FD10,15,18(T)-MW  
 FD10,15,18(T)-MG  
 FG(L)10,15,18(T)-MG  
 FG(L)10,15,18(T)-MW





门架(基本型)/MAST(NORMAL MAST M)

FD10,15,18(T)-MW  
FD10,15,18(T)-MG  
FG(L)10,15,18(T)-MG  
FG(L)10,15,18(T)-MW



序号 Item No	图号 Part No	零部件名称 Description	件数 Q'ty	备注 Remark
01	M1538000001	Cap	2	支座盖
02	M1538000002	Bushing	4	轴衬
03	GB5785-86	Bolt	4	螺栓M16×1.5×80
04	GB93-87	Washer	2	垫圈16
05	GB/T7940.2-1995	Fitting	2	弯颈式滑脂嘴45
06	M1538000007	Pin	2	倾斜缸销轴
07	GB5786-86	Bolt	2	螺栓M8×1.25×20
08	GB5786-87	Washer	2	垫圈8
09	M1508301000	Outer mast	1	外门架总成
10	M1508302000	Inner mast	1	内门架总成
11	760311Y1T	Shaft	2	复合滚轮
12	M1538000003	Slipper	2	限位滑块
13	M1538000004	Shim	AR	调整垫片0.5



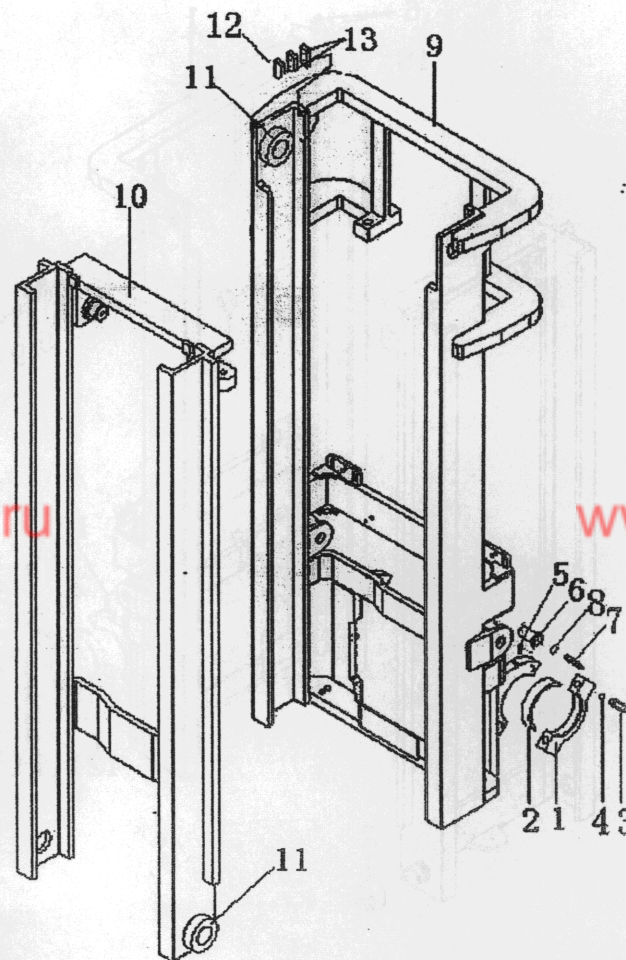


门架(基本型)/MAST(NORMAL MAST M)

门架选用件表 Mast Optional Parts

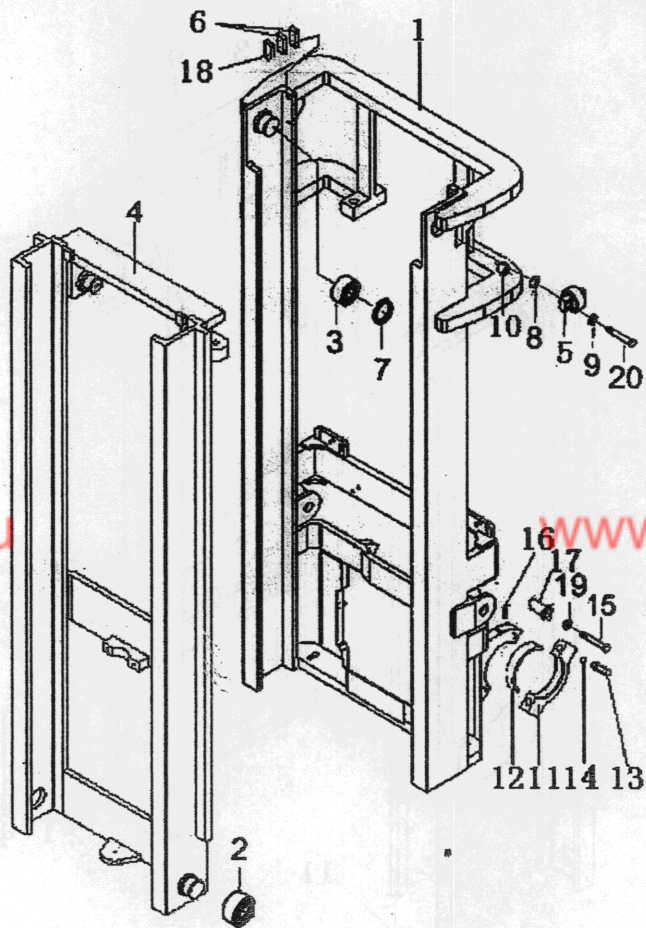
起升高度 LIFTING HEIGHT	外门架总成 OUTER MAST	内门架总成 INNER MAST	备注 Remark
	1-1.8t	1-1.8t	
2000	M1508-30212	M1508-25412	
2500	-30222	-30422	
2700	-30232	-30432	
3000	-30202	-30402	
3300	-30242	-30442	
3500	-30252	-30452	
3700	-30262	-30462 </td <td></td>	
4000	-30272	-30472	
4250	-30282	-30482	
4500	-30292	-30492	
4750	-30312	-30512	
5000	-30322	-30522	
5500	-30332	-30532	
6000	-30342	-30542	

FD10,15,18(T)-MW  
 FD10,15,18(T)-MG  
 FG(L)10,15,18(T)-MG  
 FG(L)10,15,18(T)-MW





FD10,15,18(T)-MW  
 FD10,15,18(T)-MG  
 FG(L)10,15,18(T)-MG  
 FG(L)10,15,18(T)-MW



序号 Item No	图号 Part No	零部件名称 Description	件数 Q'ty	备注 Remark
01	M1504301000	Mast ass'y, outer	1	外门架总成
02	760311Y1T	roller	2	复合滚轮
03	-	Roller	2	滚轮
04	M1504302000	Mast ass'y, inner	1	内门架总成
05	C2-3	Side roller	2	侧滚轮组
06	M1538000004	Shim	AR	调整垫片0.5
-	M1538000005	Shim	AR	调整垫片1.0
07	GB894.1-86	Snap ring	2	挡圈40
08	GB93-87	Shim	4	调整垫圈
09	GB93-87	Washer, lock	3	垫圈12
10	M1538000006	Shim	4	调整垫圈
11	M1538000001	Cap	2	支座盖
12	M1538000002	Bushing	2	轴衬
13	GB5785-86	Bolt	4	螺栓M16×1.5×80
14	GB93-87	Washer, lock	4	垫圈16
15	GB5786-86	Bolt	4	螺栓M8×1.25×20
16	GB/T7940.2-1995	Grease, lock	2	弯颈式滑脂嘴
17	M1538000007	Pin axle	2	销轴
18	M1538000003	Slipper	2	限位滑块
19	GB93-87	Washer, lock	4	垫圈12
20	GB5786-86	Bolt	4	螺栓M12×1.25×35

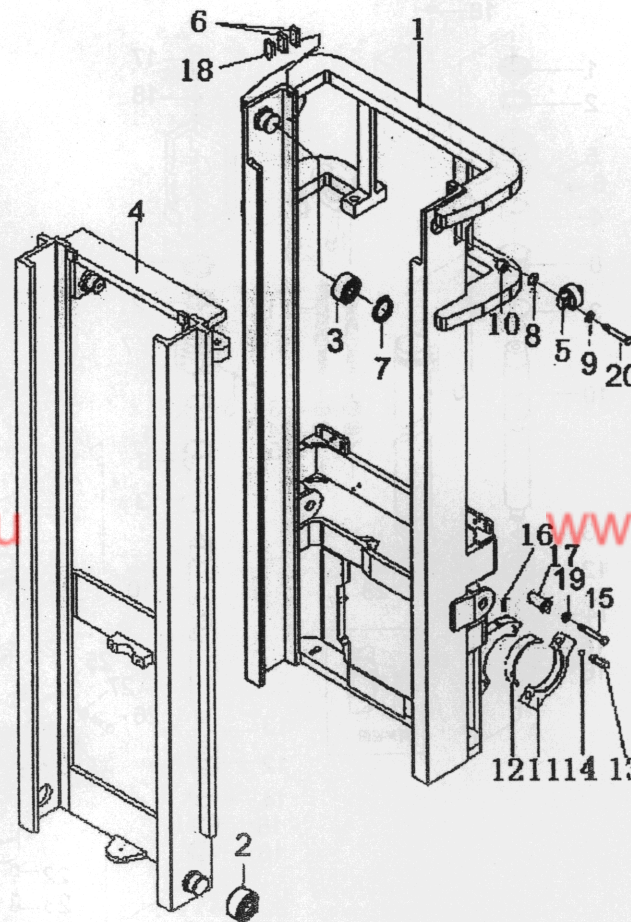




门架选用件表 Mast Optional Parts

起升高度 LIFTING HEIGHT	外门架总成 OUTER MAST 1-1.8t	内门架总成 INNER MAST 1-1.8t	备注 Remark
2000	M2508-40212	M2508-40512	
2250	-40222	-40522	
2500	-40232	-40532	
2750	-40242	-40542	
2700	-40252	-40552	
3000	-40202	-40502	
3250	-40262	-40662	
3300	-40272	-40772	
3500	-40282	-40882	
3660	-40292	-40792	
3700	-40312	-40812	
3750	-40322	-40822	
4000	-40332	-40832	
4250	-40342	-40842	
4500	-40352	-40852	
4750	-40362	-40862	
5000	-40372	-40872	
5500	-40382	-40682	
6000	-40392	-40892	

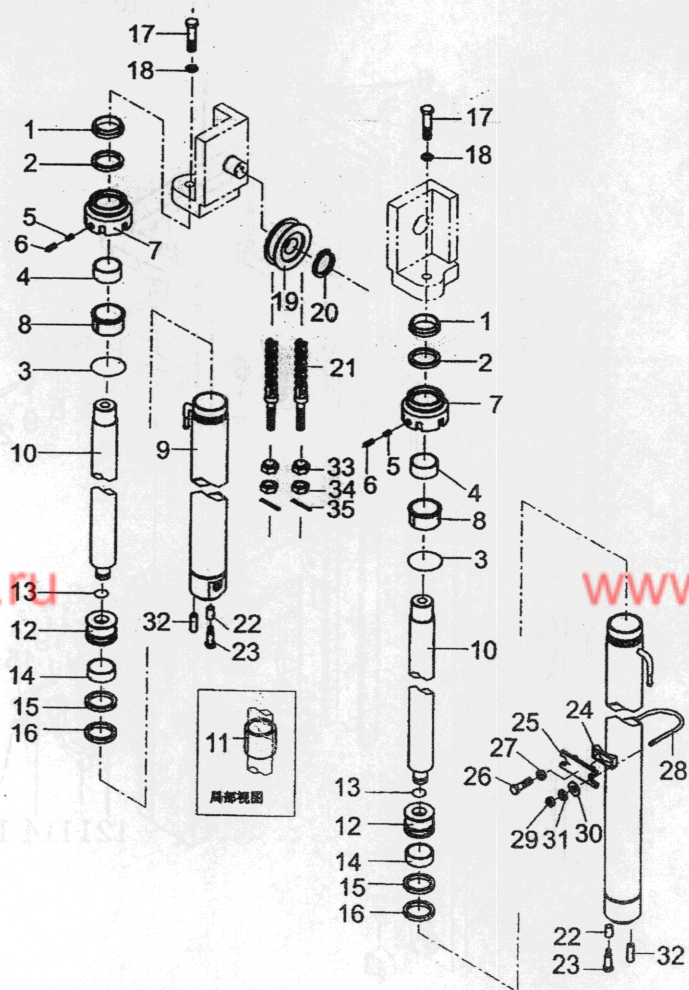
FD10,15,18(T)-MW  
 FD10,15,18(T)-MG  
 FG(L)10,15,18(T)-MG  
 FG(L)10,15,18(T)-MW





起升油缸(基本型)/LIFT CYLINDER(NORMAL MAST M)

FD10,15,18(T)-MW  
 FD10,15,18(T)-MG  
 FG(L)10,15,18(T)-MG  
 FG(L)10,15,18(T)-MW



序号 Item No	图号 Part No	零部件名称 Description	件数 Q'ty	备注 Remark
A	M1538408000	Lift cylinder(Inc.1-16)	2	起升油缸总成
01	M1538408001	Seal	2	防尘圈
02	M1538408002	Packing	2	密封圈
03	M1538408003	Bushing	2	钢背轴承
04	GB3452.1-86	O-ring	2	O型圈52×2.65
05	M1538404004	Plug	4	塞子
06	GB80-85	Screw	4	螺钉M8×8
07	M1538408005	Cap	2	导向套
08	M1538408006	sleeve	2	衬套
09	M1538408107	Cylinder	2	缸体
10	M1538408208	Rod	2	活塞杆
11	M1538408009	Spacer	2	调整套
12	M1538408010	Piston	2	活塞
13	M1538408011	snap ring	2	钢丝挡圈
14	M1538408012	Wearing	2	支撑环
15	M1538408013	Snap ring	2	挡片
16	-	U-ring	2	U型密封圈
17	GB5786-86	Bolt	2	螺栓M16×1.5×40
18	GB93-87	Washer	2	垫圈16
19	M1538408014	Sheave	2	链轮
20	GB894.1-86	Snap ring	2	弹性挡圈40
21	M1538001000	Chain(Inc.33-35)	2	链条总成
22	M1538408015	Sleeve	2	隔套
23	GB5786-86	Bolt	2	螺栓M12×1.25×25
24	M1538408016	Spacer	2	调整块
25	M1538408017	Support	2	油缸支撑块

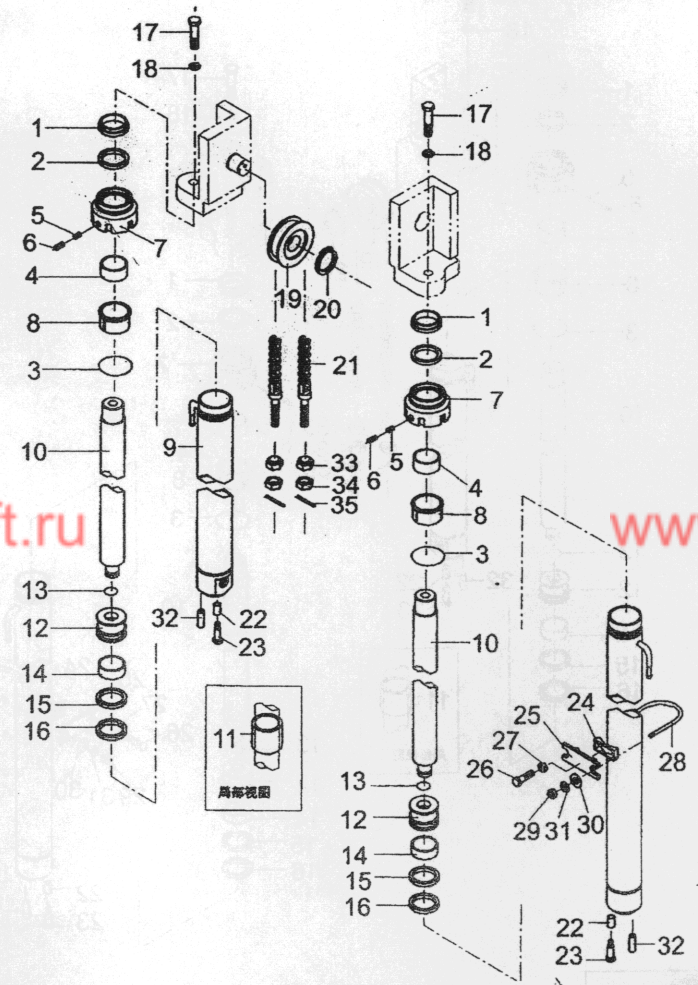




起升油缸(基本型)/LIFT CYLINDER(NORMAL MAST M)

序号 Item No	图号 Part No	零部件名称 Description	件数 Q'ty	备注 Remark
26	GB5786-86	Bolt 螺栓M12×1.25×50	2	
27	GB6171-86	Nut 螺母M12×1.25	2	
28	M3038408018	U-bolt U型螺栓	2	
29	GB6173-86	Nut 螺母M12×1.25	4	
30	GB97.1-85	Washer 垫圈10	4	
31	GB93-87	Washer 垫圈10	4	
32	GB119-86	Pin 销B10×26	2	
33	GB6171-86	Nut 螺母	4	
34	GB6171-86	Nut 螺母M18×1.5	4	
35	GB91-86	Pin 开口销B3×30	4	

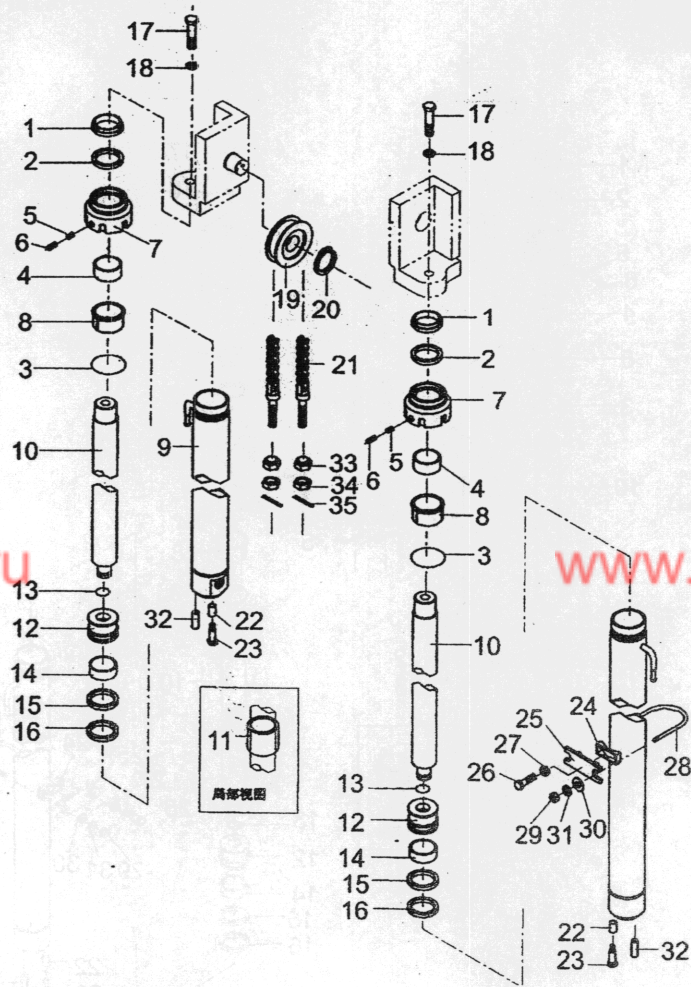
FD10,15,18(T)-MW  
 FD10,15,18(T)-MG  
 FG(L)10,15,18(T)-MG  
 FG(L)10,15,18(T)-MW





FD10,15,18(T)-MW  
FD10,15,18(T)-MG  
FG(L)10,15,18(T)-MG  
FG(L)10,15,18(T)-MW

1-1.8t起升油缸选用件(基本型) LIFT CYLINDER OPTION TABLE(NOMAL MAST)



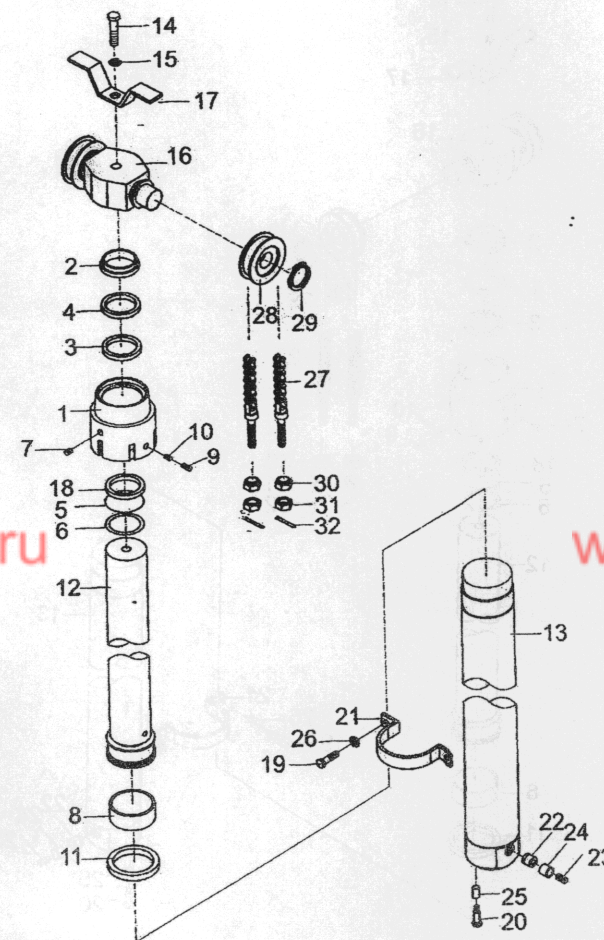
起升高度 LIFTING HEIGHT	起升油缸总成 LIFT CYL	缸体 LYL BODY	活塞杆 RID. PISTON	链条总成 CHAIN ASS Y	备注 Remark
2000	M1538408020	M1538408120	M1538408220	LH1234 × 074	
2500	M1538408025	M1538408125	M1538408225	LH1234 × 087	
2700	M1538408027	M1538408127	M1538408227	LH1234 × 092	
3000	M1538408030	M1538408130	M1538408230	LH1234 × 100	
3300	M1538408033	M1538408133	M1538408233	LH1234 × 108	
3500	M1538408035	M1538408135	M1538408235	LH1234 × 113	
3700	M1538408037	M1538408137	M1538408237	LH1234 × 118	
4000	M1538408040	M1538408140	M1538408240	LH1234 × 129	
4250	M1538408043	M1538408143	M1538408243	LH1234 × 135	
4500	M1538408045	M1538408145	M1538408245	LH1234 × 142	
4750	M1538408048	M1538408148	M1538408248	LH1234 × 149	
5000	M1538408050	M1538408150	M1538408250	LH1234 × 155	
5500	M1538408055	M1538408155	M1538408255	LH1234 × 171	
6000	M1538408060	M1538408160	M1538408260	Lh1234 × 184	





序号 Item No	图号 Part No	零部件名称 Description	件数 Q'ty	备注 Remark
A	M1539504000	Lift cylinder(front) (inc.01-13,18,22-24) 前升油缸	1	
01	M1539504300	Cap, lift cylinder 前缸盖	1	
02	M1539504400	Dust ring 防尘圈75	1	
03	M1539504500	Yx-ring seal Yx密封圈d75	1	
04	M1539504600	Snap ring 挡圈(一)	1	
05	GB3452.1-86	O-ring seal O型密封圈100×3.1	1	
06	M1539504700	snap ring 挡圈(二)	1	
07	M1539504800	Plug 螺塞	2	
08	M1539504900	Wearing 支撑环	1	
09	GB80-85	Screw 螺钉M6×10	2	
10	M3039505000	Plug 塞子	2	
11	M1539505000	Seal ring 密封环90×82.4×4.5	1	
12	M1539504100	Piston rod ass'y 柱塞杆总成	1	
13	M1539504200	Cylinder body(front) 前缸体	1	
14	GB5782-86	Bolt 螺栓M16×80	1	
15	GB93-87	Washer lock 垫圈16	1	
16	M1539505100	Sheave seat 链轮座	1	
17	M1539505200	Stopper, chain 护链板	1	
18	M1539505300	Bushing 钢背轴承7530	1	
19	GB5786-86	Bolt 螺栓M10×1.25×20	2	
20	GB5786-86	Bolt 螺栓M12×1.25×30	1	
21	M1539505400	Support 固定卡	1	
22	M1539505500	Spool 阀芯	1	
23	M1539505600	Spring 弹簧	1	
24	M1539505700	Seat, spring 弹簧座	1	
25	M1539505800	Spacer 隔套	1	

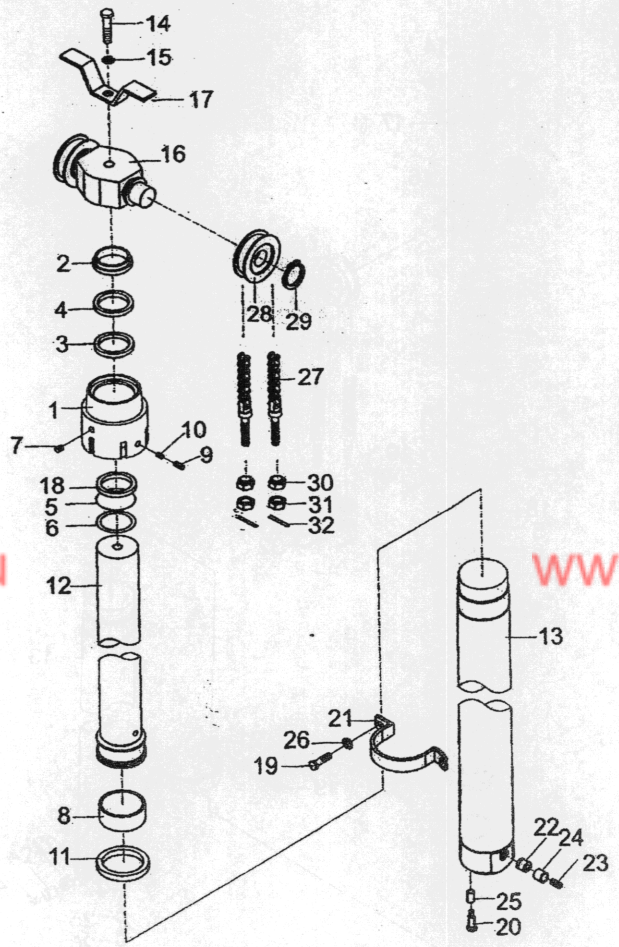
FD10,15,18(T)-MW  
 FD10,15,18(T)-MG  
 FG(L)10,15,18(T)-MG  
 FG(L)10,15,18(T)-MW





前起升油缸(二级全自由)/FRONT LIFT CYLINDER(FULL FREE 2-STAGE MAST ZM)

FD10,15,18(T)-MW  
 FD10,15,18(T)-MG  
 FG(L)10,15,18(T)-MG  
 FG(L)10,15,18(T)-MW



序号 Item No	图号 Part No	零部件名称 Description	件数 Q'ty	备注 Remark
26	GB93-87	Washer,lock	垫圈10	2
27	M1539505900	Chain ass'y(Inc.30-32)	链条总成	2
28	M1539506000	Sheave	链轮	2
29	GB894.1-86	Snap ring	挡圈40	2
30	GB6171-86	Nut	螺母	4
31	GB6171-86	Nut	螺母M18×1.5	4
32	GB91-86	Pin	开口销3×30	4



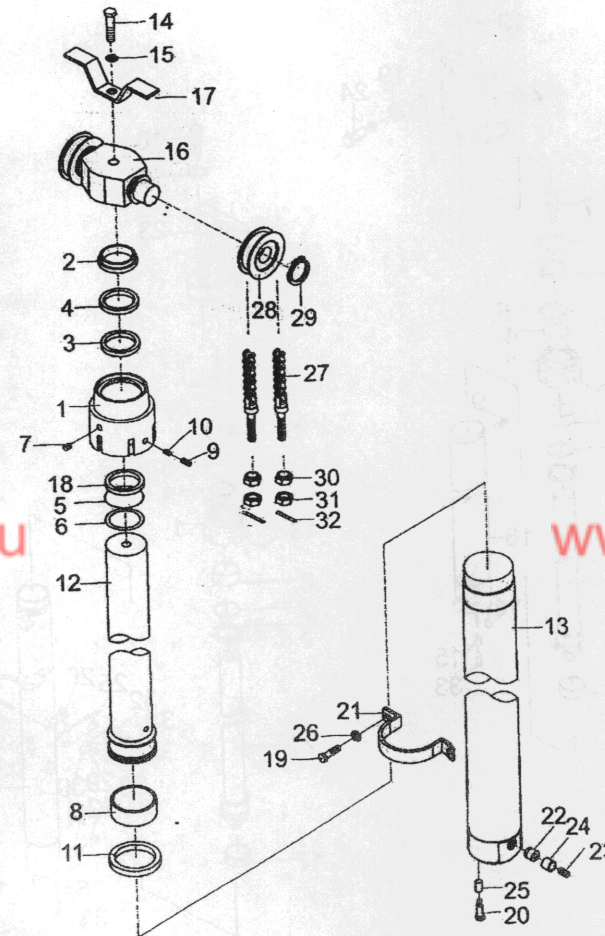


1,1.8t前起升缸选用件(二级全自由门架)

OPTIONAL PARTS 1~1.8 TON FORNT LIFT CYLINDER (FULL FREE 2-STAGE MAST)

起升高度 LIFTING HEIGHT	起升油缸总成 LIFT CYL	缸体 LYL BODY	活塞杆 RID PISTON	链条总成 CHAIN ASS Y	备注 Remark
2000	M1539504020	M1539504120	M1539504220	LH1234 × 041	
2250	M1539504023	M1539504123	M1539504223	LH1234 × 047	
2500	M1539504025	M1539504125	M1539504225	LH1234 × 054	
2750	M1539504028	M1539504128	M1539504228	LH1234 × 060	
3000	M1539504030	M1539504130	M1539504230	LH1234 × 067	
3300	M1539504033	M1539504133	M1539504233	LH1234 × 075	
3500	M1539504035	M1539504135	M1539504235	LH1234 × 080	
3700	M1539504037	M1539504137	M1539504237	LH1234 × 085	
4000	M1539504040	M1539504140	M1539504240	LH1234 × 093	
4250	M1539504043	M1539504143	M1539504243	LH1234 × 100	
4500	M1539504045	M1539504145	M1539504245	LH1234 × 106	
4750	M1539504048	M1539504148	M1539504248	LH1234 × 113	
5000	M1539504050	M1539504150	M1539504250	LH1234 × 119	
5500	M1539504055	M1539504155	M1539504255	LH1234 × 133	
6000	M1539504060	M1539504160	M1539504260	Lh1234 × 146	

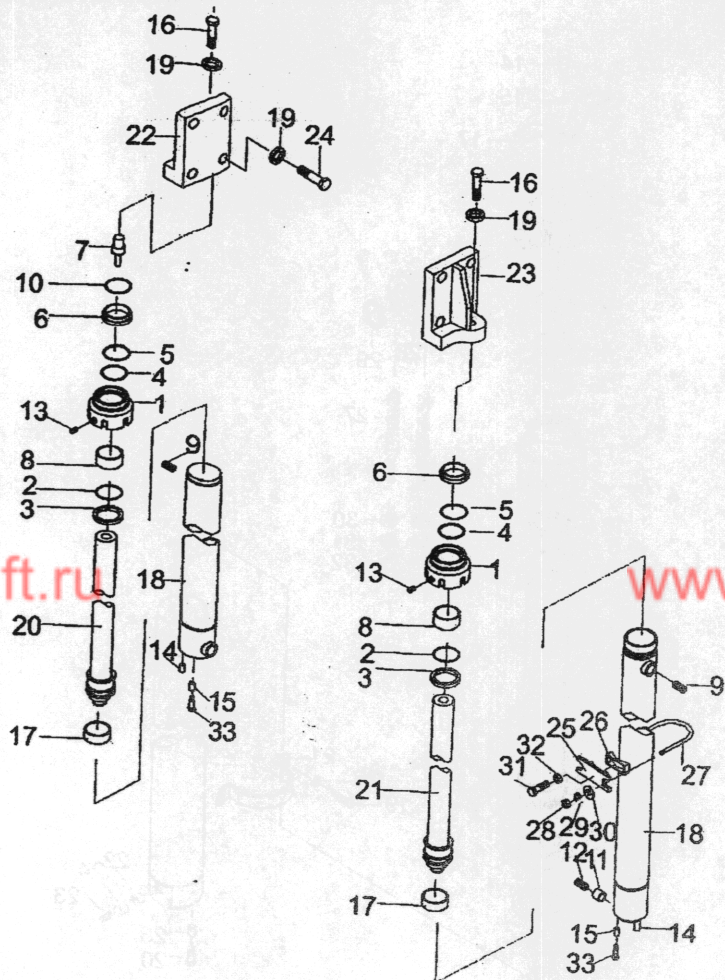
FD10,15,18(T)-MW  
 FD10,15,18(T)-MG  
 FG(L)10,15,18(T)-MG  
 FG(L)10,15,18(T)-MW





后起升油缸(二级全自由)/REAR LIFT CYLINDER(FULL FREE 2-STAGE MAST ZM)

FD10,15,18(T)-MW  
 FD10,15,18(T)-MG  
 FG(L)10,15,18(T)-MG  
 FG(L)10,15,18(T)-MW



序号 Item No	图号 Part No	零部件名称 Description	件数 Q'ty	备注 Remark
A	M1538404000	Lift cylinder(rear) (Inc.1-14,17,18,20,21) 后升降油缸	1	
01	M1538404201	Cap,cylinder 缸盖	2	
02	GB1235-76	O-ring seal O型密封圈	2	
03	M1538404300	Snap ring 挡圈	2	
04	M1538404400	Yx-ring Yx密封圈d35	2	
05	M1538404500	Snap ring 挡圈	2	
06	M1538404600	Dust ring 防尘圈35	2	
07	M1538404700	Joint rod 连接杆	1	
08	GS-1	Bushing 钢背轴承4030	2	
09	GB80-85	Screw 螺钉M6×10	4	
10	GB1235-76	O-ring seal O型密封圈26×2.4	1	
11	M1538404900	Spool 阀芯	1	
12	M1538405000	Spring 弹簧	1	
13	M1538405100	Plug 螺塞Z1/8"	4	
14	GB119-86	Pin 销10×25	2	
15	M1538405200	Spacer 隔套	2	
16	GB786-86	Bolt 螺栓M16×1.5×35	2	
17	M1538405300	Wearing 支撑环	2	
18	M1538404200	Cylinder body(L.H.&R.H.) 缸体(左右各一)	2	
19	GB93-87	Washer lock 垫圈10	10	
20	M1538404100	Piston rod ass'y,R.H. 右柱塞杆总成	1	
21	M2038304100	Piston rod ass'y,L.H. 左柱塞杆总成	1	
22	M1538405400	Bracket,R.H. 支架(右)	1	
23	M1538305400	Bracket,L.H. 支架(左)	1	
24	GB5783-86	Bolt 螺栓M16×40	8	
25	M1538305500	Support 油缸支撑块	2	





序号 Item No	图号 Part No	零部件名称 Description	件数 Q'ty	备注 Remark
26	M1538305600	Rubber 调整块	2	
27	M1538408018	U-bolt U型螺栓	2	
28	GB6173-86	Nut 螺母M10×1.25	4	
29	GB93-87	Washer lock 垫圈10	4	
30	GB97.1-85	Washer 垫圈10	4	
31	GB5786-86	Bolt 螺栓M12×1.25×40	2	
32	GB6170-86	Nut 螺母M12×1.25	2	
33	GB5786-86	Bolt 螺栓M12×1.25×25	2	

FD10,15,18(T)-MW  
 FD10,15,18(T)-MG  
 FG(L)10,15,18(T)-MG  
 FG(L)10,15,18(T)-MW

