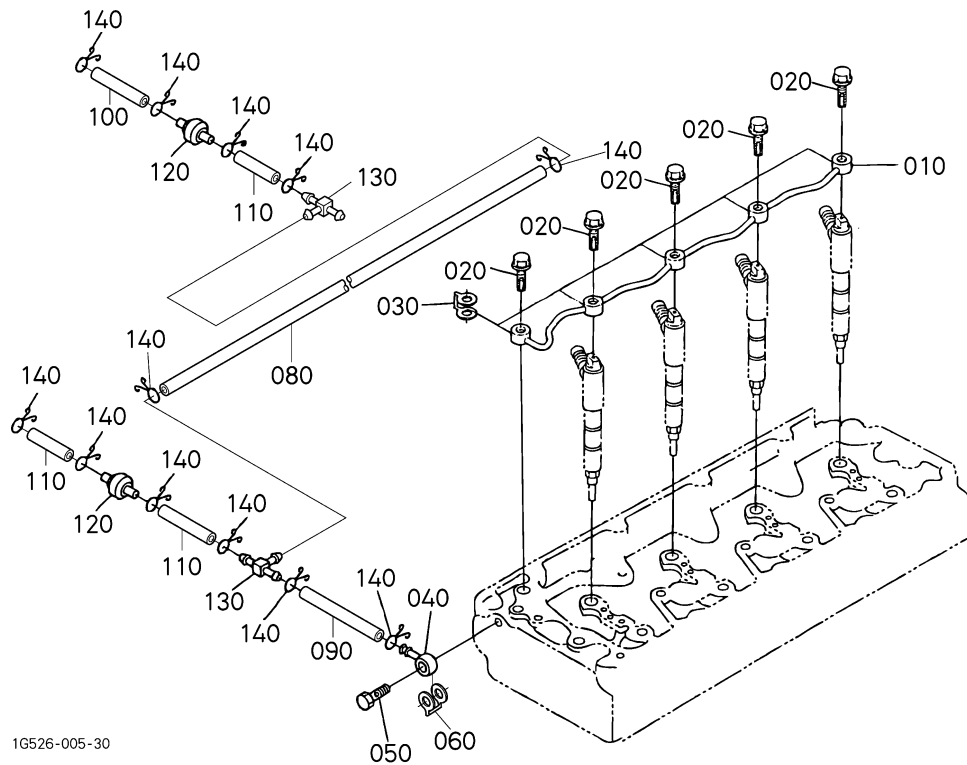


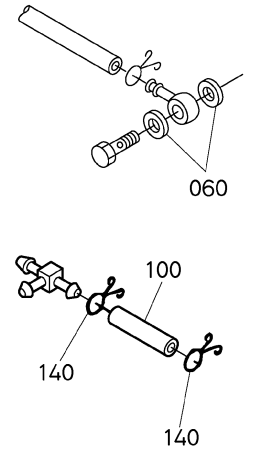


020602 溢流管  
OVER FLOW PIPE



1G526-005-30

OLD PARTS



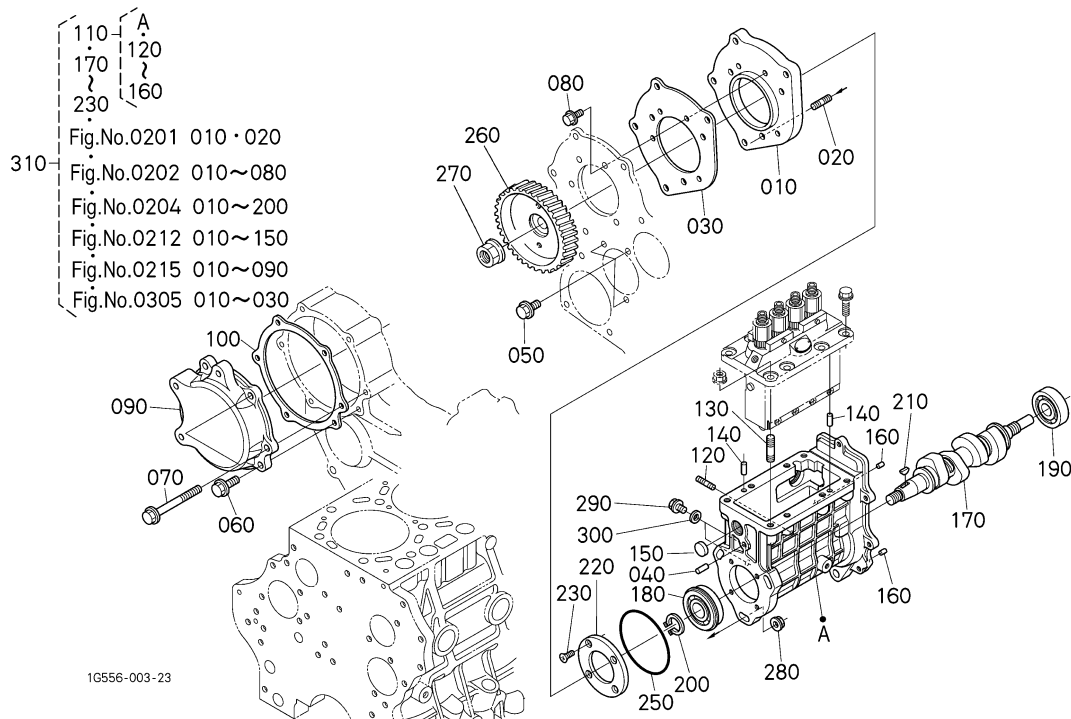
1G529-802-20

A: V3300DI-E2B-SWD-1

序号 REF. No.	零件号 PART No.	零件名称	PART NAME	数量 Q' TY/S. No.		互 换 性 I. C.	备注 REMARKS
				A	B		
010	1C020-4250-0	溢流管总成	ASSY PIPE, OVER FLOW	1	-		
020	1C020-9581-0	环眼螺栓	BOLT, EYE JOINT	5	-		
030	1C020-9673-0	垫圈	GASKET	5	-		
040	14117-4256-0	管接头	JOINT, PIPE	1	-		
050	15471-9579-0	环眼螺栓	BOLT, EYE JOINT	1	-		
060	15021-3366-0	垫圈	GASKET	2	-		
060	1G772-3366-0	垫圈	GASKET	1	-	↔	#
070	---	空白	BLANK	-	-		
080	1G574-4211-0	油管	TUBE, FUEL	1	-		
090	1G574-4212-0	油管	TUBE, FUEL	1	-		
100	1G574-4213-0	油管	TUBE, FUEL	2 ≤-6W2898	-		#
100	1G574-4213-0	油管	TUBE, FUEL	1 >=6Y0009	-		#
110	1G574-4214-0	油管	TUBE, FUEL	3	-		
120	1C010-4246-0	单向阀	VALVE, FUEL CHECK	2	-		
130	1G065-4236-0	管接头	JOINT, T-PIPE	2	-		
140	14971-4275-0	管夹	CLIP, PIPE	14 ≤-6W2898	-		#
140	14971-4275-0	管夹	CLIP, PIPE	12 >=6Y0009	-		#

0209

# 燃油泵壳体 PUMP HOUSING



1G556-003-23

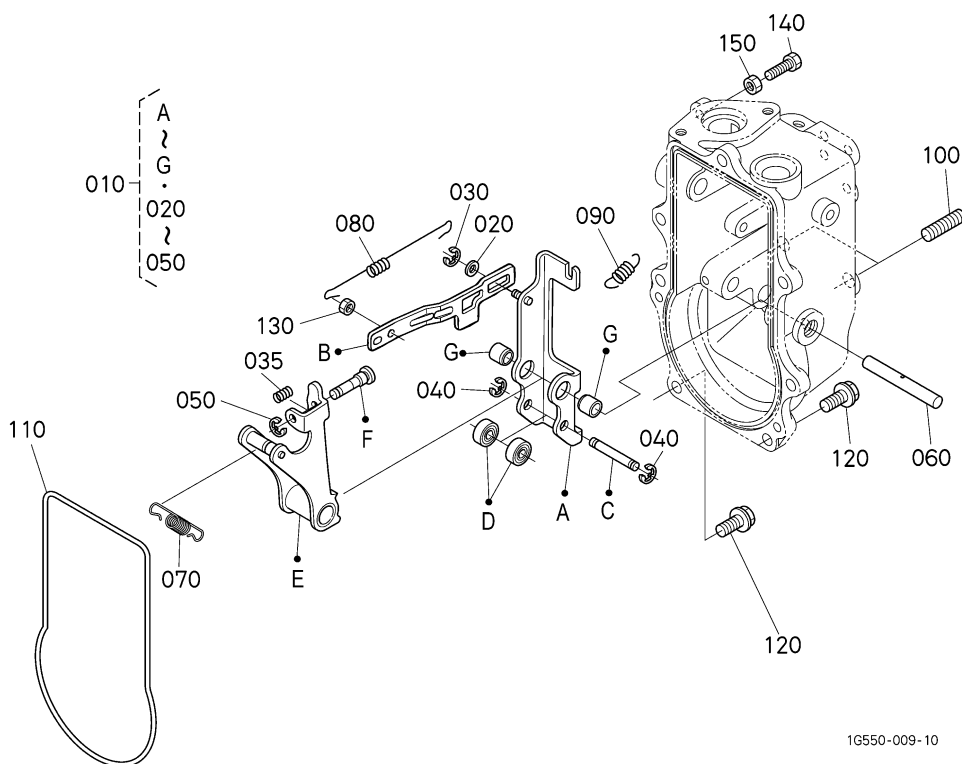
A:V3300DI-E2B-SWD-1

序号 REF. No.	零件号 PART No.	零件名称	PART NAME	数量 Q' TY/S. No.		互 换 性 I. C.	备注 REMARKS
				A	B		
010	1C010-5117-4	高压油泵基座	BASE, INJECTION PUMP	1	-		
020	1C020-9149-0	双头螺栓	STUD	3	-		
030	1C010-5118-0	高压油泵基座垫圈	GASKET, I/P BASE	1	-		
040	05012-00614	圆柱销	PIN, STRAIGHT	1	-		
050	01754-50814	法兰螺栓	BOLT, FLANGE	3	-		
060	01754-50825	法兰螺栓	BOLT, FLANGE	1	-		
070	01754-50875	法兰螺栓	BOLT, FLANGE	5	-		
080	01754-50614	法兰螺栓	BOLT, FLANGE	3	-		
090	1C010-5165-0	高压油泵盖	COVER, INJ. PUMP	1	-		
100	1C010-5166-0	高压油泵盖垫圈	GASKET, I/P COVER	1	-		
110	1C020-5080-0	燃油泵壳体总成	ASSY HOUSING, I/P	1	-		
120	16245-9154-0	双头螺栓	STUD	2	-		
130	15471-9153-0	双头螺栓	STUD	3	-		
140	05012-00609	圆柱销	PIN, STRAIGHT	2	-		
150	1C010-5514-0	塞子	PLUG, I/P HOUSING	1	-		
160	05012-00512	圆柱销	PIN, STRAIGHT	2	-		
170	1G514-1617-3	燃油凸轮轴	CAMSHAFT, FUEL	1	-		
180	1G527-1657-0	滚珠轴承	BEARING, BALL	1	-		
190	08101-06303	滚珠轴承	BEARING, BALL	1	-		
200	04612-00200	外圆形夹	CIR CLIP, EXTERNAL	1	-		
210	12331-9523-0	键	KEY, WOODRUFF	1	-		
220	1C020-1632-2	燃油凸轮轴止推片	STOPPER, FUEL C/SHAFT	1	-		
230	03016-50616	螺钉	SCREW, GSK-HD	4	-		
240	----	空白	BLANK	-	-		
250	1C010-5213-0	高压油泵垫圈	GASKET, INJ. PUMP	1	-		
260	1C010-5115-2	高压油泵齿轮	GEAR, INJECTION PUMP	1	-		
270	02776-50140	螺母	NUT, UBS	1	-		
280	02751-50080	法兰螺母	NUT, FLANGE	3	-		
290	01754-50814	法兰螺栓	BOLT, FLANGE	2	-		
300	15021-3366-0	垫圈	GASKET	2	-		



0212

叉杆 (调速器)  
FORK LEVER (GOVERNOR)



1G550-009-10

A:V3300DI-E2B-SWD-1

序号 REF. No.	零件号 PART No.	零件名称	PART NAME	数量 Q' TY/S. No.		互 换 性 I. C.	备注 REMARKS
				A	B		
010	1G514-5603-2	叉杆总成	ASSY LEVER, FORK	1 ≤6Y2811	-		#
010	1G514-5603-4	叉杆总成	ASSY LEVER, FORK	1 ≥7A0001	-	←	#
020	04013-60050	平垫圈	WASHER, PLAIN	1	-		
030	04613-50040	外圆形夹	CIR CLIP, EXTERNAL	1	-		
035	1G514-5423-0	弹簧	SPRING	1	-		
040	04613-50050	外圆形夹	CIR CLIP, EXTERNAL	2	-		
050	04613-50030	外圆形夹	CIR CLIP, EXTERNAL	1	-		
060	1G517-5615-0	叉杆轴	SHAFT, FORK LEVER	1	-		
070	1G514-5641-2	调速器弹簧	SPRING, GOVERNOR	1	-		
080	1G514-5648-0	起动弹簧	SPRING, START	1	-		
090	1C010-5792-0	停车杆弹簧	SPRING, STOP LEVER	1	-		
100	01518-50820	双头螺栓	STUD	2	-		
110	1C010-5577-0	垫圈	GASKET, GOV. HOUSING	1	-		
120	01754-50618	法兰螺栓	BOLT, FLANGE	7	-		
130	1C010-9202-0	定位螺母	NUT, LOCK	1	-		
140	15108-5728-0	止推片	STOPPER	1	-		
150	02056-50060	螺母	NUT	1	-		













