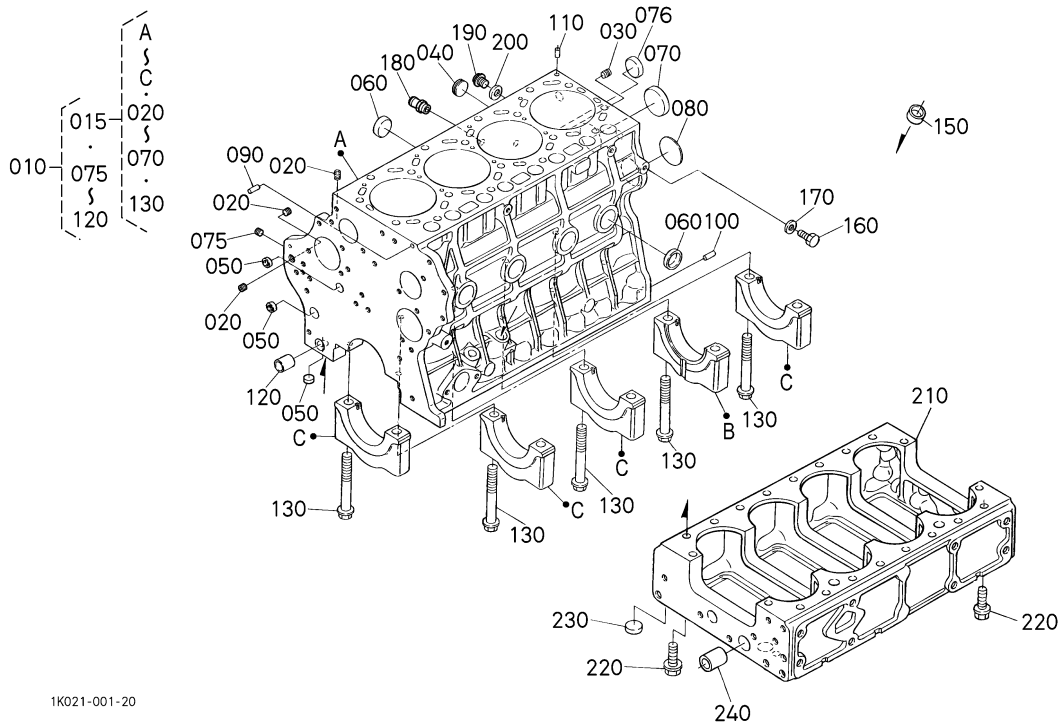
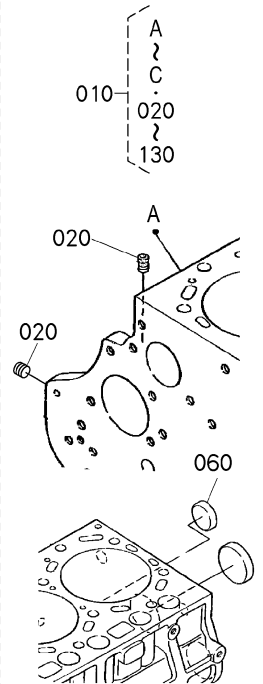


0001

曲轴箱
CRANKCASE



OLD PARTS



1G529-801-10

A: V3300DI-E2B-SWD-1

序号 REF. No.	零件号 PART No.	零件名称	PART NAME	数量 Q' TY/S. No.		互 换 性 I.C.	备注 REMARKS
				A	B		
010	1C010-0104-5	曲轴箱组件	COMP. CRANKCASE	1 ≤7A2477	-	#	
010	1C010-0104-6	曲轴箱组件	COMP. CRANKCASE	1 ≥7C0002	-	←	#
015	1C040-0110-0	曲轴箱上段	COMP. CRANKCASE SUB	1 ≥7C0002	-		#ORDER BY REF. No. 010 NEW PART
020	15521-9602-0	塞子 (R1/8)	PLUG	2 ≤7A2477	-	#	
020	15521-9602-0	塞子 (R1/8)	PLUG	3 ≥7C0002	-	#	
030	1C010-9601-0	塞子	PLUG	1	-		
040	16683-9602-0	塞子 (PT1)	PLUG	1	-		
050	15261-0337-0	密封盖	CAP, SEALING	4	-		
060	15221-0338-0	密封盖	CAP, SEALING	9 ≤7A2477	-	#	
060	15221-0338-0	密封盖	CAP, SEALING	7 ≥7C0002	-	#	
070	15221-0339-0	密封盖	CAP, SEALING	1	-		
075	15521-9602-0	塞子 (R1/8)	PLUG	1 ≥7C0002	-	#	
076	15221-0338-0	密封盖	CAP, SEALING	2 ≥7C0002	-	#	
080	1C010-9616-0	膨胀塞	PLUG, EXPANSION	1	-		
090	05012-00820	圆柱销	PIN, STRAIGHT	1	-		
100	05012-01016	圆柱销	PIN, STRAIGHT	4	-		
110	15221-3365-0	管销	PIN, PIPE	2	-		
120	1C010-3364-0	销子	PIN, GEAR CASE	1	-		
130	1C010-0456-0	螺栓	BOLT, BEARING CASE	10	-		
140	----	空白	BLANK	-	-		
150	15261-0337-0	密封盖	CAP, SEALING	1	-		
160	15221-3361-0	塞子	PLUG	1	-		
170	15021-3366-0	垫圈	GASKET	1	-		
180	1C010-3711-4	放水开关接头	JOINT, WATER PIPE	1	-		
190	06311-55030	塞子	PLUG	1	-		
200	04724-00170	垫圈	GASKET	1	-		
210	1C010-0112-6	曲轴箱下段	CRANKCASE	1	-		
220	01774-51030	法兰螺栓	BOLT, FLANGE	16	-		
230	15221-0338-0	密封盖	CAP, SEALING	1	-		
240	1C010-3365-0	销子	PIN, GEAR CASE	1	-		

↔ Interchangeable; ≠ not interchangeable; ← new for old; → old for new

