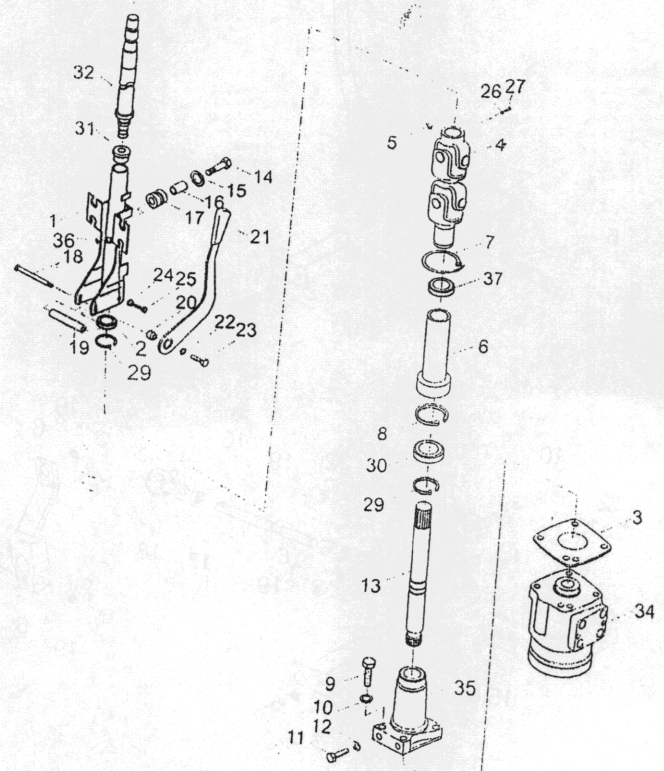
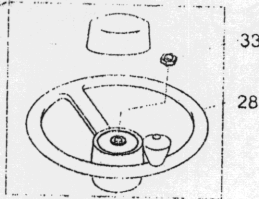
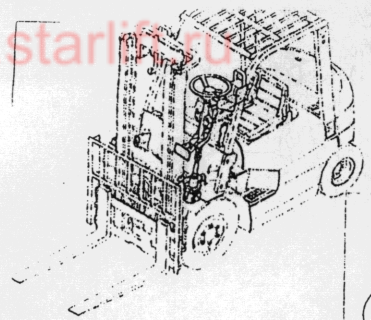


CPC, CPCD20, 25, 30, 35
CPQ, CPQD20, 25, 30, 35

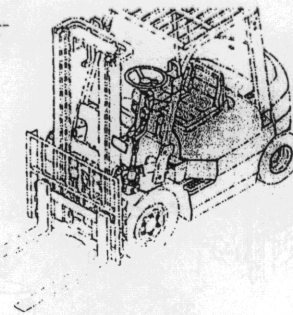


序号 Item No	图号 Part No	零件名称 Description	件数 Q'ty	备注 Remark
01	H24C4-10211	Column	1	转向管柱
02	Z-61904-Z	Bearing	1	轴承61904-Z GB1276-94
03	H24C4-12231	Shim	1	调整垫
04	H24C4-10301	Joint	1	万向节总成
05	Z2500-01010	Titting,grease	1	油杯 M10×1 GB1152-85
06	H24C4-12101	Boot	1	护套
07	ZD-04015	Band	1	捆扎带 ZD4X150
08	B6050-00037	Snap ring	1	挡圈37 GB893.1-86
09	B0230-10045	Bolt	4	螺栓 M10×45 GB5782-86
10	B5050-00010	Washer	4	垫圈10 GB93-87
11	B0330-12025	Bolt	2	螺栓 M12×25 GB5783-86
12	B5050-00012	Washer	2	垫圈12 GB93-87
13	H24C4-12111	Link	1	连接轴
14	B0230-06035	Bolt	4	螺栓 M6×35 GB5782-86
15	H24C4-12131	Washer	4	垫片
16	A22A4-12141	Spacer	4	套管
17	A22A4-12101	Rubber	4	橡胶套
18	H24C4-12151	Bolt (left)	1	螺栓(左旋)
19	H24C4-12161	Spacer	1	套管
20	H24C4-12171	Nut	1	螺母
21	H24C4-10501	Lever	1	手柄总成
22	B5210-00010	Washer	1	垫圈10 GB96-85
23	H24C4-12191	Bolt (left)	1	螺栓 M10×16(左旋)
24	H24C4-12211	Washer	2	垫圈
25	H24C4-12221	Bolt	2	螺栓
26	B5050-00008	Washer	1	垫圈8 GB93-87
27	B0230-08035	Bolt	1	螺栓M8X35 GB5782-86
28	A22A4-11102	Handle Shaft Ass'y	1	方向盘总成
-	A22A4-19101	Handle Shaft Ass'y	1	方向盘总成 选用 Optin
29	B6152-00020	Snap ring	2	弹簧挡圈20 GB894.1-86

图84/FIG84

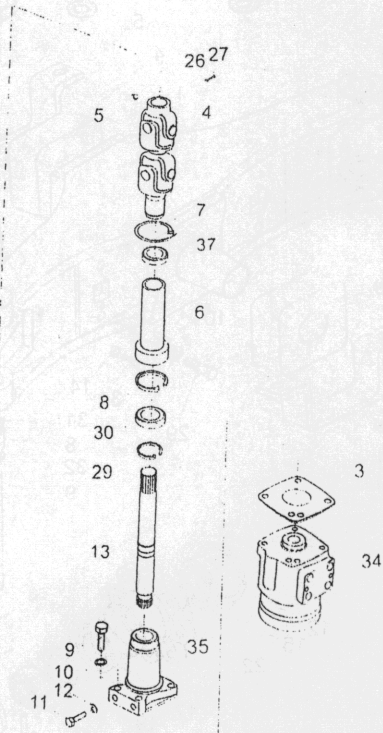
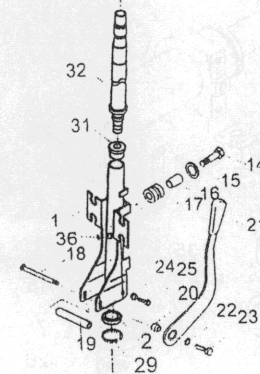
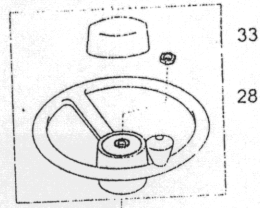
转向系统/STEERING SYSTEM

D1



序号 Item No	图号 Part No	零部件名称 Description	件数 Q'ty	备注 Remark
30	Z-61904-2Z	Bearing 轴承61904-2Z	1	GB/T276-94
31	A22A2-46001	Spacer Ass'y 上衬套总成	1	
32	A73J4-12052	Shaft 转向轴	1	
33	B4423-00016	Nut 螺母M16X1.5	1	GB6173-865
34	502-1302	Orbitrol 摆线全液压转向器BZZ-100	1	
35	H24C4-12121	Flange 连接法兰	1	
36	AO1D4-12021	Grommet 喇叭线套	1	
37	H24C4-12251	Seal,oil 旋转轴骨架油封GP20x38x8	1	

CPC, CPCD20, 25, 30, 35
CPQ, CPQD20, 25, 30, 35



D

