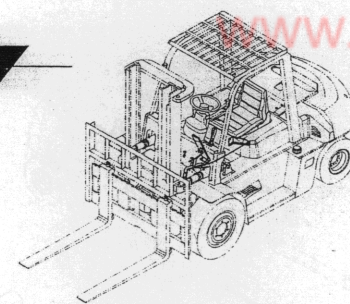


图46/FIG46

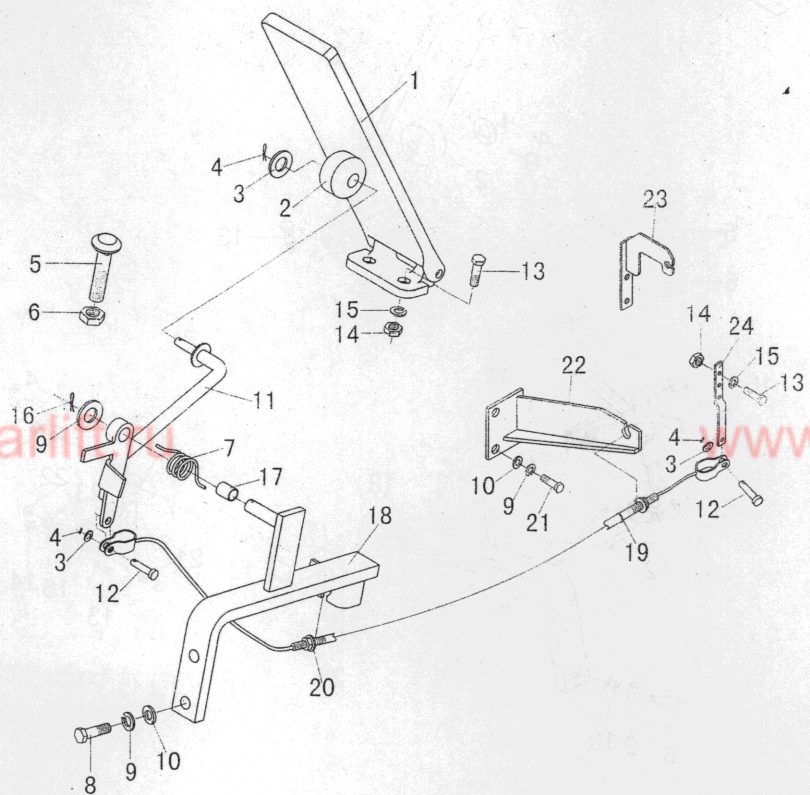
图47/FIG47

油门操纵/ACCELERATOR PEDAL

E1



备注 Remark	序号 Item No	图号 Part No	零部件名称 Description	件数 Q'ty	备注 Remark
					CPCD80,100-W5,C3
8t	A	H43E5-60001	Accelerator pedal 油门操纵装置	1	CPCD80,100-W5
10t	-	H08E5-60001	Accelerator pedal 油门操纵装置	1	CPCD80,100-C3
8t	01	H24C5-60201	Accelerator pedal ass'y 踏板总成	1	
10t	02	H24C5-60201	Sheave 滚轮	1	
	03	B5310-00006	Washer 垫圈	2	GB97.1-85
	04	B3010-1P620	Pin,cotter 销1.6X20	2	CPCD80,100-W5
	05	H43E5-62051	Bolt 螺栓	3	GB91-86
	06	B4216-00012	Nut 螺母M12X1.25	1	GB6171-86
	07	25785-22031	Spring 弹簧	1	
GB5786-86 10t	08	B0530-10035	Bolt 螺栓M10X1.25X35	2	GB5786-86
8t	09	B5310-00010	Washer 垫圈	6	GB97.1-85
10t	10	B5050-00010	Washer,lock 垫圈	4	GB93-87
	11	H43E5-60201	Link ass'y 连接轴总成	1	
GB1235-76	12	B3220-06016	Pin 销B6X16	1	CPCD80,100-W5
	13	B0330-06020	Bolt 螺栓M6X20	2	GB882-86
	14	B4116-00006	Nut 螺母M6	2	CPCD80,100-C3
	15	B5050-00006	Washer,lock 垫圈	4	GB5783-86
	16	B3010-3P226	Pin,cotter 销3.2X26	2	CPCD80,100-W5
	17	Z2131-01015	Bushing 钢背轴承1015	4	CPCD80,100-C3
	18	H43E5-60301	Bracket 支架总成	2	CPCD80,100-W5
	19	G0155-20071	Band 扎带ZD150X3.5	4	GB93-87
	20	H43E5-60401	Soft shaft 推拉软轴	1	GB91-86
	-	H08E5-60202	Soft shaft 推拉软轴	1	CPCD80,100-C3
	21	B0330-10020	Bolt 螺栓M10X20	2	GB5783-86
	22	A45E5-60201	Bracket 拉索支架	4	CPCD80,100-W5
	23	H08E5-60302	Bracket 拉索支架	1	CPCD80,100-C3
	24	H08E5-62021	Link 连接板	1	CPCD80,100-C3

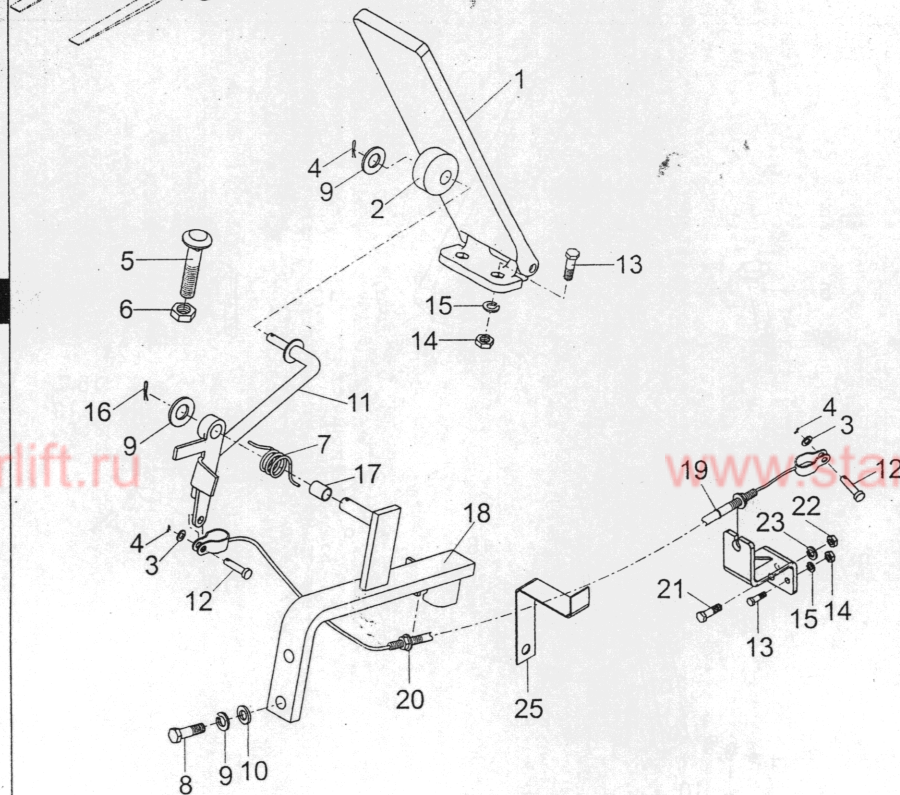
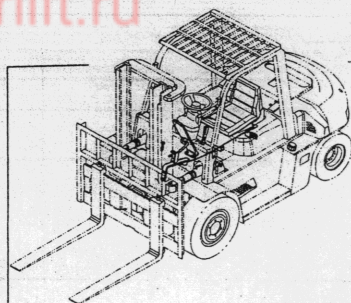


E2

油门操纵/ACCELERATOR PEDAL

图48/FIG48

图



CPCD80,100-CU

序号 Item No	图 号 Part No	零部件名称 Description	件数 Q'ty	备 注 Remark	序号 Item No
A	H58J5-60001	Accelerator pedal	1	油门操纵装置	A
01	H24C5-60201	Accelerator pedal ass'y	1	踏板总成	01
02	H24C5-62021	Sheave	1	滚轮	02
03	B5310-00006	Washer	2	垫圈6	03
04	B3010-1P620	Pin,cotter	3	销1.6X20	04
05	H43E5-62051	Bolt	1	螺栓	05
06	B4216-00012	Nut	1	螺母M12X1.25	06
07	25785-22031	Spring	1	弹簧	07
08	B0530-10035	Bolt	2	螺栓M10X1.25X35	08
09	B5310-00010	Washer	5	垫圈10	09
10	B5050-00010	Washer,lock	2	垫圈10	10
11	H43E5-60201	Link assy	1	连接轴总成	11
12	B3220-06016	Pin	2	销B6X16	12
13	B0330-06020	Bolt	4	螺栓M6X20	13
14	B4116-00006	Nut	4	螺母M6	14
15	B5050-00006	Washer,lock	4	垫圈6	15
16	B3010-3P226	Pin,cotter	1	销3.2X26	16
17	Z2131-01015	Bushing	1	钢背轴承1015	17
18	H43E5-60301	Bracket	1	支架总成	18
19	G0155-20071	Band	1	扎带ZD150X3.5	19
20	H08E5-60202	Soft shaft	1	推拉软轴	20
21	B0330-08020	Bolt	1	螺栓M8X20	21
22	B4116-00008	Nut	1	螺母M8	22
23	B5050-00008	Bracket	1	垫圈8	23
24	H58J5-60201	Link	1	拉索支架总成	24
25	H58J5-62031	Link	1	支架	25

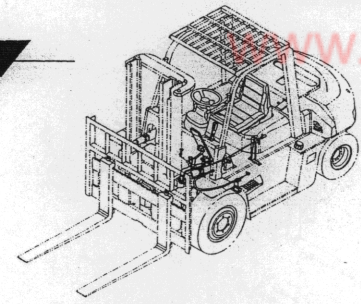
E

48/FIG48

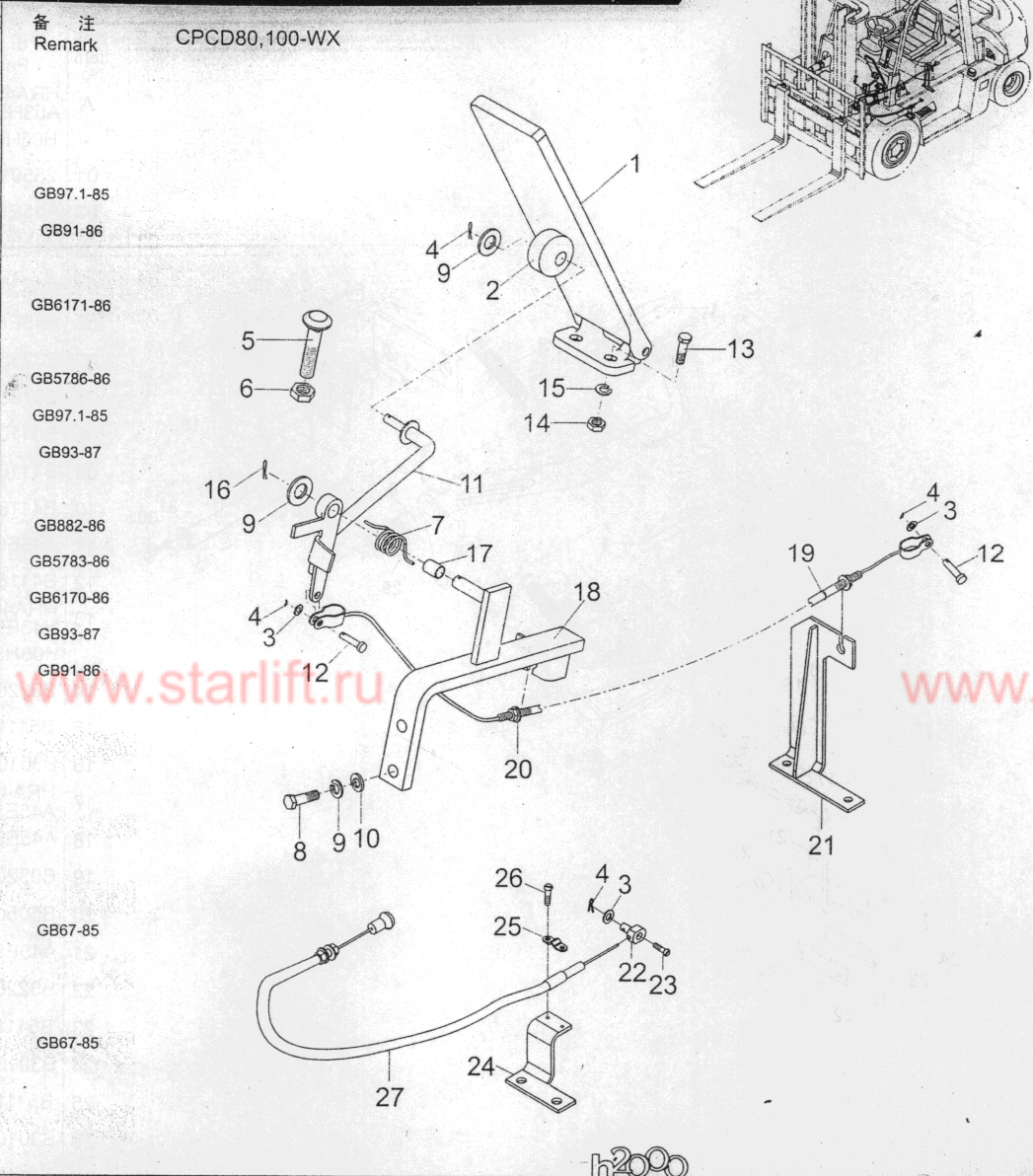
图49/FIG49

油门操纵/ACCELERATOR PEDAL

E3



备注 Remark	序号 Item No	图号 Part No	零部件名称 Description	件数 Q'ty	备注 Remark
	A	H05J5-60001	Accelerator pedal	油门操纵装置	1
	01	H24C5-60201	Accelerator pedal ass'y	踏板总成	1
	02	H24C5-62021	Sheave	滚轮	1
GB97.1-85	03	B5310-00006	Washer	垫圈6	3
GB91-86	04	B3010-1P620	Pin, cotter	销1.6X20	5
	05	H43E5-62051	Bolt	螺栓	1
GB6171-86	06	B4216-00012	Nut	螺母M12X1.25	1
	07	25785-22031	Spring	弹簧	1
GB5786-86	08	B0530-10035	Bolt	螺栓M10X1.25X35	2
GB97.1-85	09	B5310-00010	Washer	垫圈10	4
GB93-87	10	B5050-00010	Washer, lock	垫圈10	2
	11	H43E5-60201	Link assy	连接轴总成	1
GB882-86	12	B3220-06016	Pin	销B6X16	2
GB5783-86	13	B0330-06020	Bolt	螺栓M6X20	2
GB6170-86	14	B4116-00006	Nut	螺母M6	2
GB93-87	15	B5050-00006	Washer, lock	垫圈6	2
GB91-86	16	B3010-3P226	Pin, cotter	销3.2X26	1
	17	Z2131-01015	Bushing	钢背轴承1015	1
	18	H43E5-60301	Bracket	支架总成	1
	19	G0155-20071	Band	扎带ZD150X3.5	1
	20	A06H5-62011	Soft shaft	推拉软轴	1
GB5783-86	21	A06H5-60201	Bracket	拉索支架	1
GB6170-86	22	20065-22000	Pin	钢丝绳固定销	1
GB93-87	23	B1110-04010	Screw	螺钉M4X10	1
	24	A06H5-62021	Bracket	钢丝绳固定架	1
	25	3C53-00-06	Plate	钢丝绳固定板	1
	26	B1110-04016	Screw	螺钉M4X16	2
	27	A06H5-60301	Flameout control unit	熄火操纵装置	1



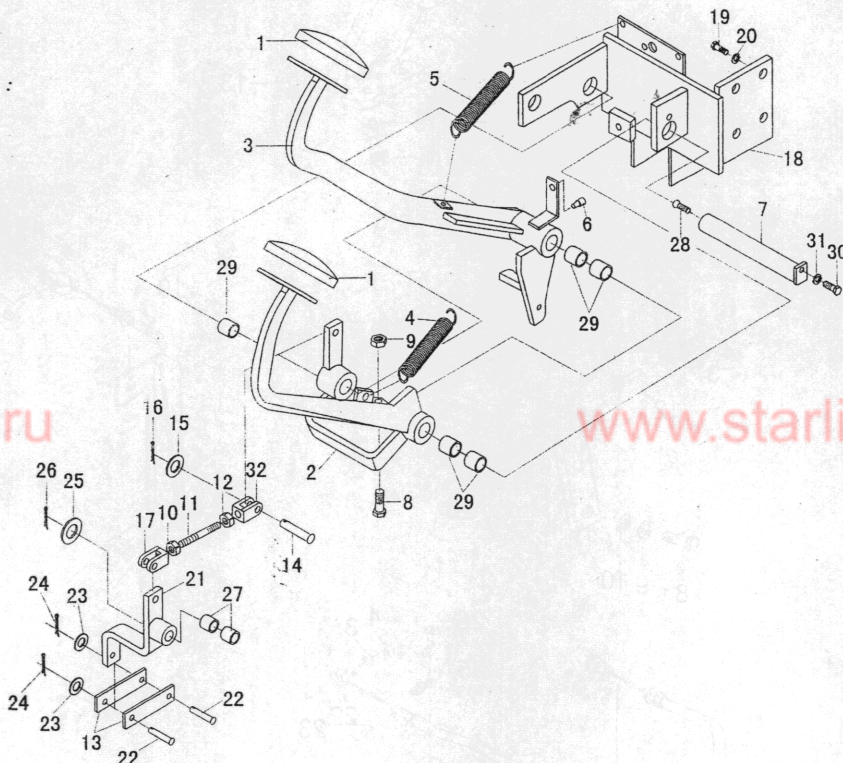
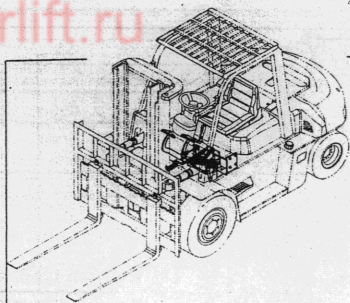
E



E4

行车制动与微动操纵/ BRAKE & INCHING CONTROL

图50/FIG50



CPCD80,100

序号 Item No	图号 Part No	零部件名称 Description	件数 Q'ty	备注 Remark
A	HRA45E5401	Brake & inching control	1	CPCD80,100-W5, C3,CU
-	H05H5-40001	Brake & inching control	1	CPCD80,100-WX
01	25595-42071	Cover,pedal	2	
02	A45E5-40201	Pedal, inching	1	
03	A45E5-40301	Pedal, brake	1	
04	24235-42091	Spring	1	
05	A45E5-42501	Spring	1	
06	23235-40091	Rubber	1	
07	25785-42782	Shaft, oil	1	
08	B0110-10040	Bolt	3	GB5781-86
09	B4116-00010	Nut	3	GB6170-86
10	B4116-10008	Nut(L.H.)	1	GB6170-86
11	A45E5-42511	Rod	1	
12	B4116-00008	Nut	1	GB6170-86
13	HRA45E5406	Link	2	CPCD80,100-W5, C3,CU
-	H05H5-42001	Link	2	CPCD80,100-WX
14	B3220-06025	Pin	2	GB882-86
15	B5111-00006	Washer	2	GB95-85
16	B3010-1P616	Pin, cotter	2	GB91-86
17	HRA45E5402	Clevis L.H.	1	
18	A45E5-40401	Bracket	1	
19	B0320-12020	Bolt	4	GB5783-86
20	B5050-00012	Washer, lock	4	GB93-87
21	A45E5-40501	Link	1	
22	B3220-10030	Pin	3	GB882-86
23	B5111-00010	Washer	3	GB95-85
24	B3010-3P220	Pin, cotter	3	GB91-86
25	B5111-00016	Washer	1	GB95-85
26	B3010-3P226	Pin, cotter	1	GB91-86
27	Z2111-01612	Bushing	2	钢背轴承1612

图50

序号
Item No
28
29
30
31
32
33

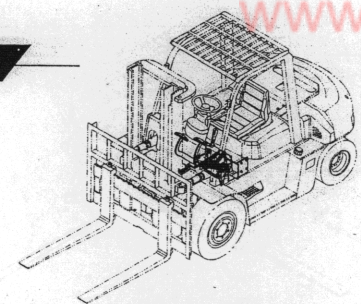
E

150/FIG50

图50/FIG50

行车制动与微动操纵/BRAKE & INCHING CONTROL

E4



备注
Remark

序号
Item No

图号
Part No

零部件名称
Description

件数
Q'ty

备注
Remark

CPCD80,100

:PCD80,100-W5
C3,CU

28

Q700B01

Fitting grease

直通式滑脂嘴Z1/8"

1

ZBT33001.1-88

29

Z2112-02525

Bushing

钢背轴承2525

5

30

B0330-08016

Bolt

螺栓M8X16

1

GB5783-86

31

B5050-00008

Washer,lock

垫圈8

1

GB93-87

32

HRA45E5402

Clevis R.H.

支耳(右)

1

33

A45E5-42591

Brake piping system

行车制动管路系统

1

CPCD80,100-W5,
C3,CU See Fig.51

HRA45E5405

Brake piping system

行车制动管路系统

1

CPCD80,100-WX
See Fig.51

A53H5-40601

Brake piping system

行车制动管路系统

1

H05H5-40201

Brake piping system

行车制动管路系统

1

GB5781-86

GB6170-86

GB6170-86

GB6170-86

:PCD80,100-W5
C3,CU

:PCD80,100-WX

GB882-86

GB95-85

GB91-86

GB5783-86

GB93-87

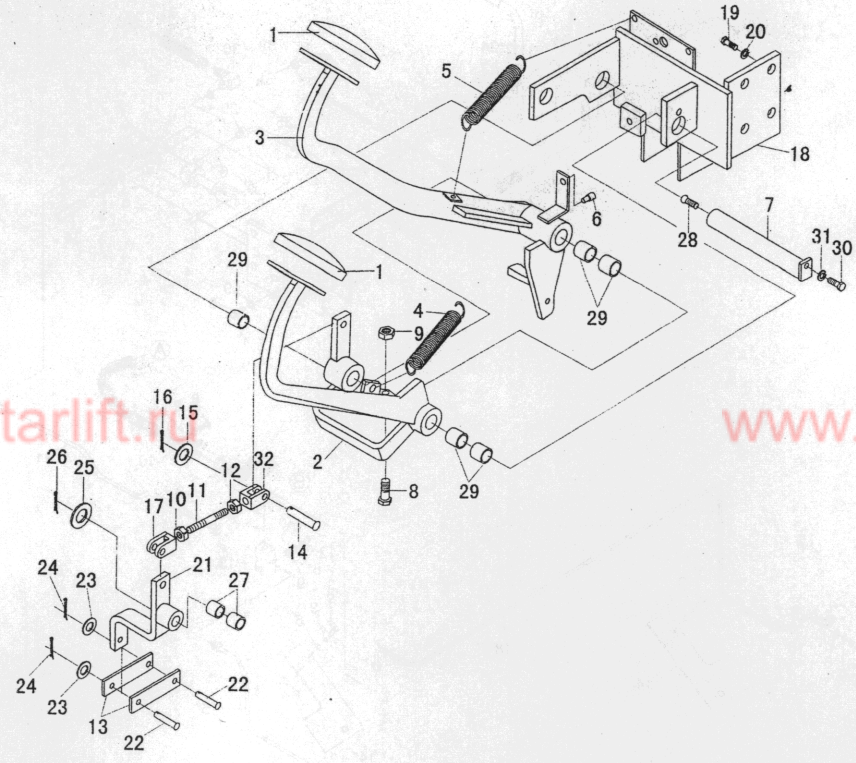
GB882-86

GB95-85

GB91-86

GB95-85

GB91-86



E

