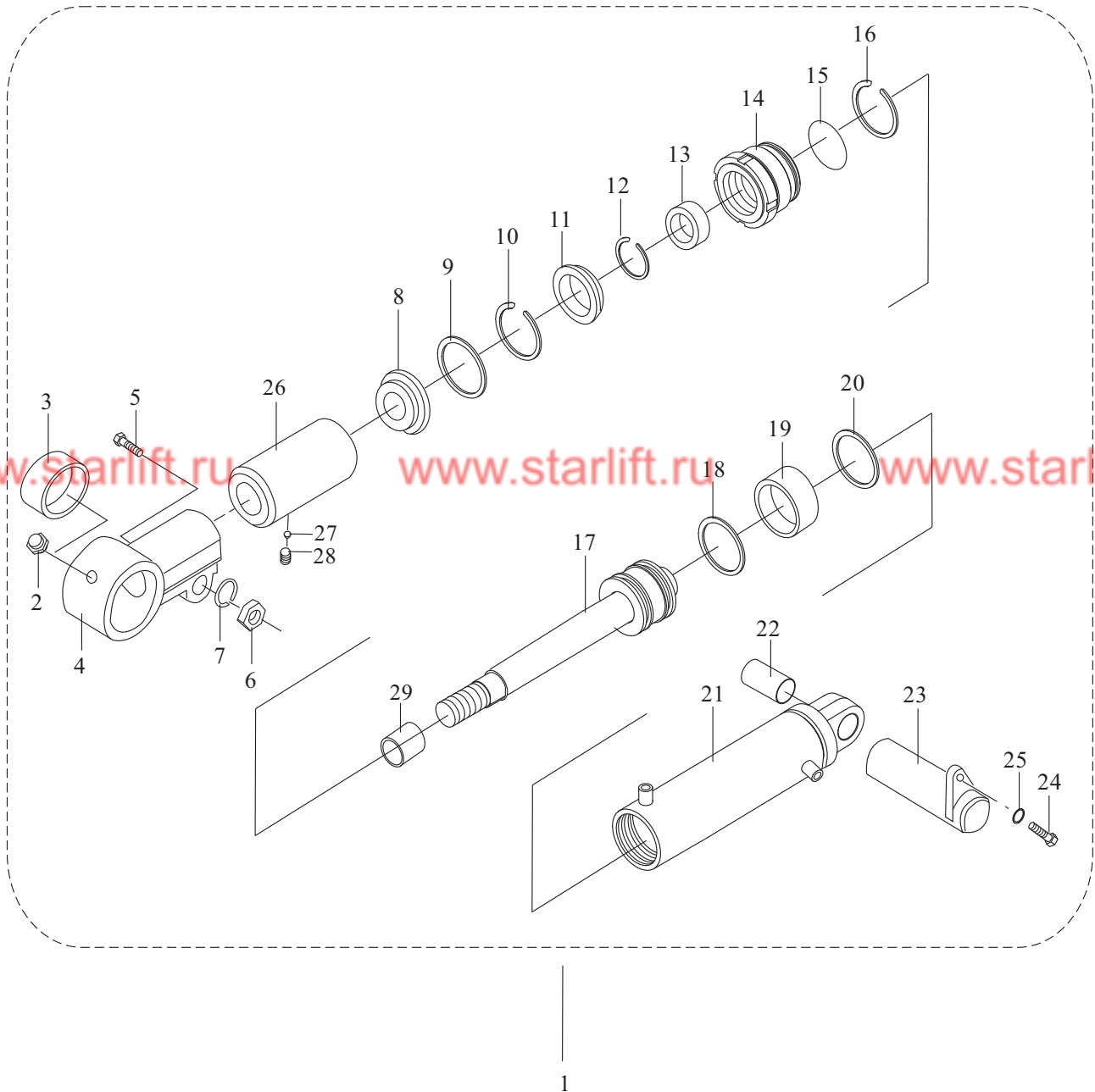


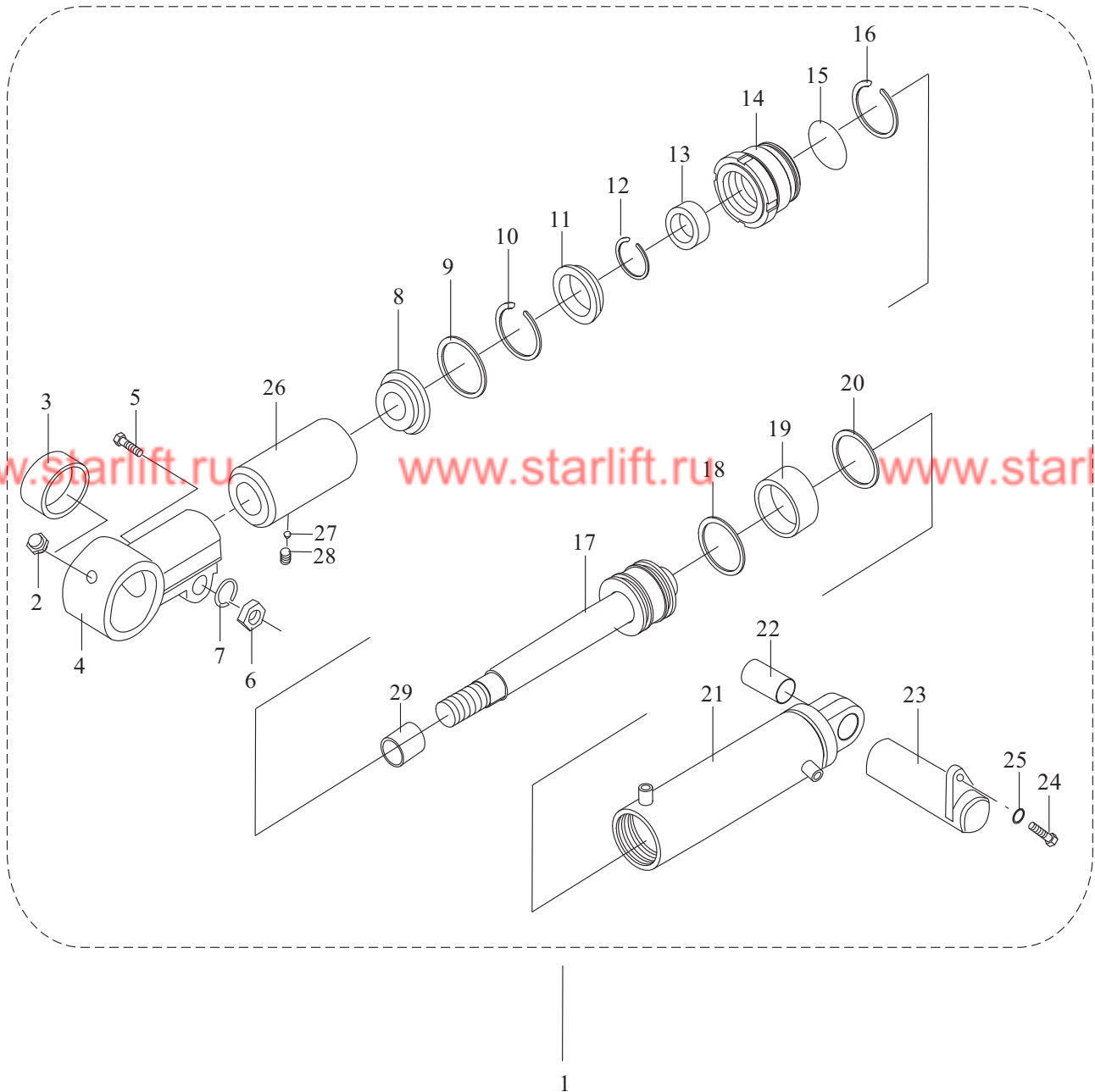
倾斜油缸
Tilt cylinder



倾斜油缸
Tilt cylinder

序号 Item	零件号 Part No	零部件名称 Description	数量 Q'ty	备注 Remark
1	A50A3-10200	倾斜油缸总成 Tilt cylinder assy	2	
2	A50A3-10201	直通式滑油脂嘴Z1/8 " Nipple grease	2	
3	A50A3-10202	钢背轴承5060 Bushing	2	
4	A50A3-10203	耳环 Ear ring	2	
5	GB/T5782-2000	螺栓M16×70 Bolt	2	
6	GB/T6710-2000	螺母M16 Nut	2	
7	GB/T93-1987	弹簧垫圈16 Washer,lock	2	
8	A50A3-10204	防尘圈72 Seal,dust	2	
9	GB893.1-86	挡圈72 Ring,snap	2	
10	A50A3-10205	挡圈 Ring,snap	2	
11	A50A3-10206	U型密封圈50 U-ring	2	
12	A50A3-10207	挡圈 Ring,snap	2	
13	A50A3-10208	钢背轴承5030 Bushing	2	
14	A50A3-10209	导向套 Guide,sleeve	2	
15	GB/T1235-76	O型密封圈 O-ring	2	
16	A50A3-10210	挡圈 Ring,snap	2	
17	A50A3-10211	活塞体 piston body	2	
18	A50A3-10212	Yx密封圈 ring	4	
19	A50A3-10213	支承环 Wearing	2	
20	A50A3-10214	挡圈 Ring,snap	2	
21	A50A3-10215	缸体 Tube,cylinder	2	
22	A50A3-10216	钢背轴承5058 Bushing	2	
23	M50A3-00100	倾斜油缸销轴总成 Pin axle ass'y	4	

倾斜油缸
Tilt cylinder



倾斜油缸
Tilt cylinder

序号 Item	零件号 Part No	零部件名称 Description	数量 Q'ty	备注 Remark
24	GB/T5786-2000	螺栓M10×1.5×20 Bolt	4	
25	GB/T93-1987	弹垫10 Washer,lock	4	
26	A50A3-10217	调整轴套 Spacer	2	
27	A50A3-10218	塞子 Plug	2	
28	GB/T73-1985	紧定螺钉M10×12 Screw	2	
29	A50A3-10219	调整套 Bushing	2	