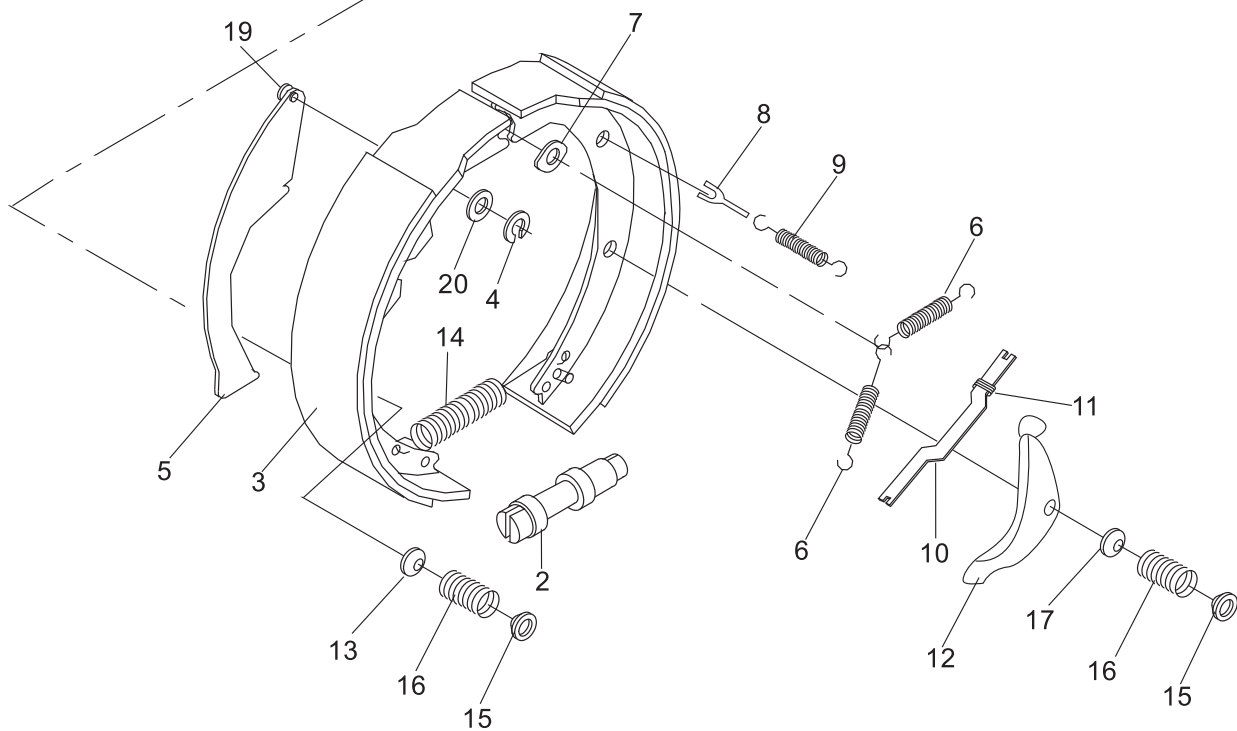
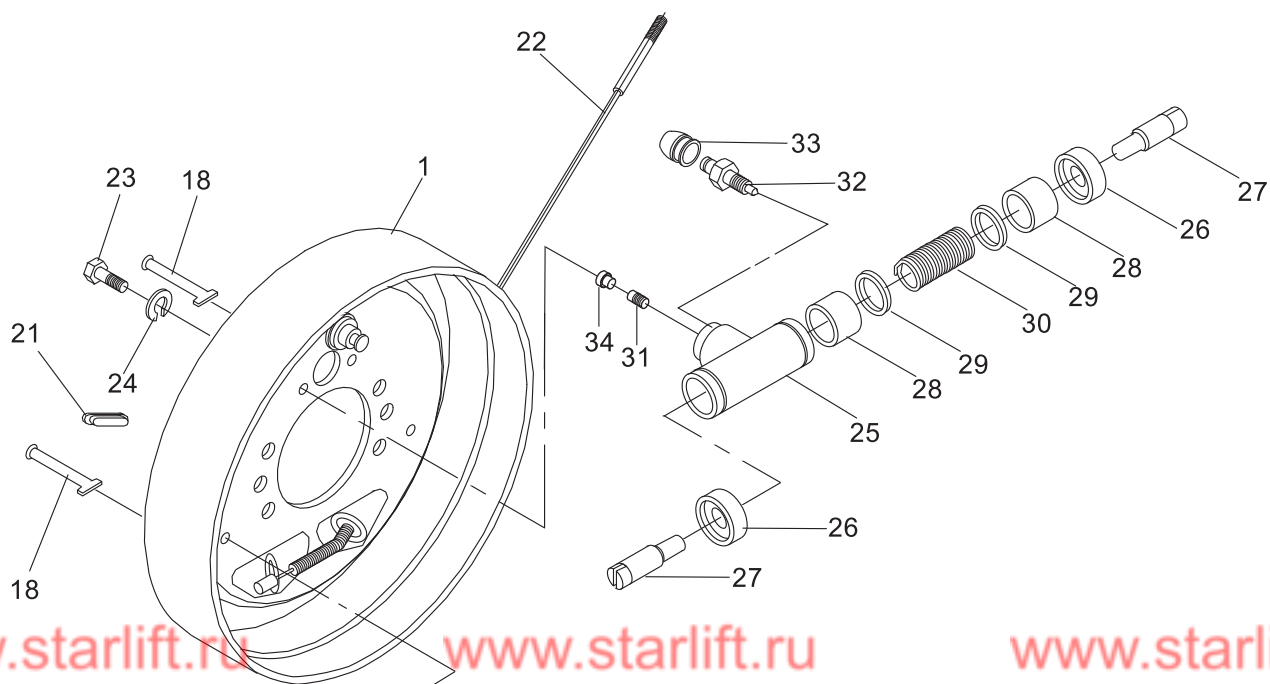


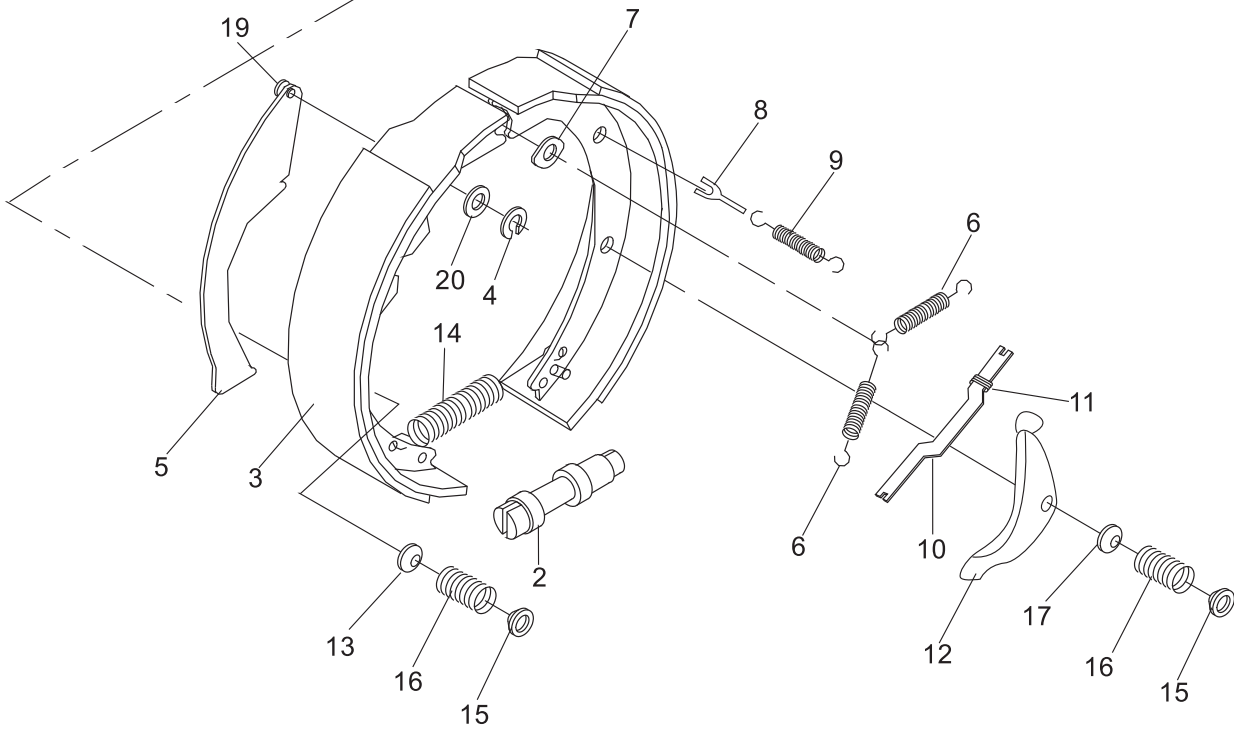
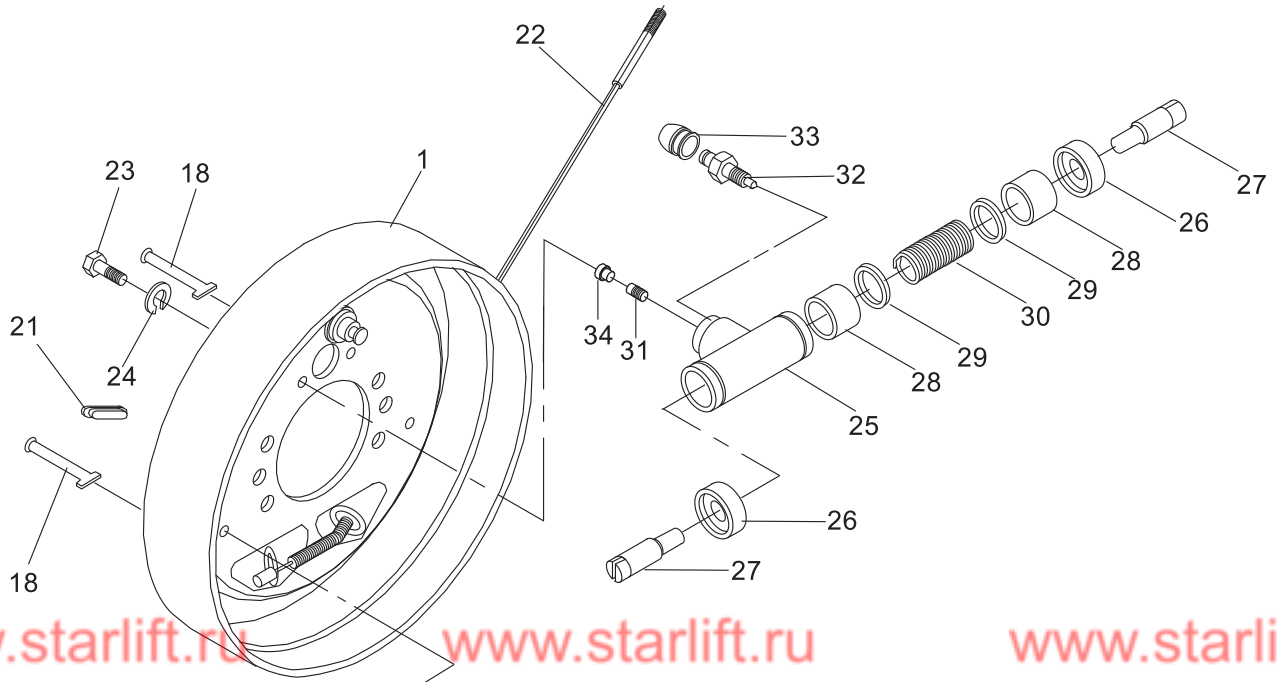
轮式制动器 (2-2.5t)
Wheel brake(2-2.5t)



轮式制动器(2-2.5t)
Wheel brake(2-2.5t)

序号 Item	零件号 Part No	零部件名称 Description	数量 Q'ty	备注 Remark
A	A20A5-02800(L)	制动器总成(左) Wheel brake	1	2-2.5t
-	A20A5-02800(R)	制动器总成(右) Wheel brake	1	2-2.5t
1	A20A5-02913	制动器底板总成 Back plate	1	2-2.5t
2	A20A5-02914	间隙调整器 Earance adjuster	1	2-2.5t
3	A20A5-02911	制动蹄带摩擦片总成 Pin, shoe & lining ass'y	2	2-2.5t
4	A20A5-02932	弹性垫片 Spring washer	1	2-2.5t
5	A20A5-02929	手制动拉杆 Rod	1	2-2.5t
6	A20A5-02922	回位弹簧 Spring shoe	2	2-2.5t
7	A20A5-02921	垫片 Washer	1	2-2.5t
8	A20A5-02923	顶杆 Rod piston	1	2-2.5t
9	A20A5-02924	回位弹簧 Spring shoe	1	2-2.5t
10	A20A5-02927	手制动推杆 Strut L. H.	1	2-2.5t
11	A20A5-02928	压缩弹簧 Spring shoe hold down	1	2-2.5t
12	A20A5-02915	调整杠杆 Rod adjuster	1	2-2.5t
13	A20A5-02917	压簧座 Cup, shoe hold down	3	2-2.5t
14	A20A5-02920	弹簧 Spring	1	2-2.5t
15	A20A5-02926	压簧座 Cover, shoe hold down	4	2-2.5t
16	A20A5-02918	压簧 Spring	4	2-2.5t
17	A20A5-02925	压簧座 Cup, shoe hold down	1	2-2.5t
18	A20A5-02916	压簧拉杆 Pin, shoe hold down	4	2-2.5t
19	A20A5-02930	支撑销 Pin	1	2-2.5t
20	A20A5-02931	垫片 Washer	1	2-2.5t

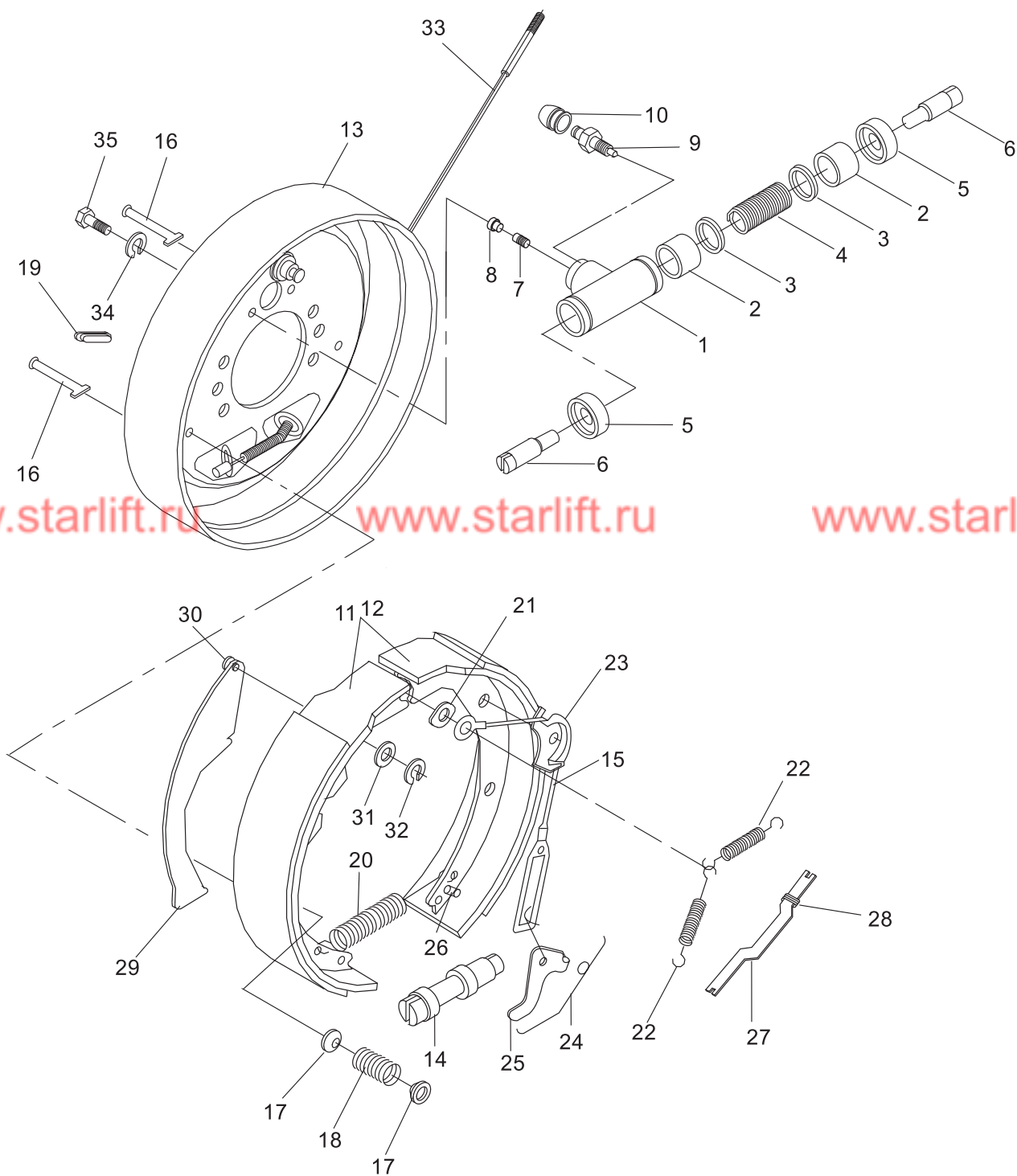
轮式制动器 (2-2.5t)
Wheel brake(2-2.5t)



轮式制动器(2-2.5t)
Wheel brake(2-2.5t)

序号 Item	零件号 Part No	零部件名称 Description	数量 Q'ty	备注 Remark
21	A20A5-02919	胶堵 Cover, adjusting hole	1	2-2.5t
22	A20A5-02933	制动钢锁总成(左) Cable L. H	1	2-2.5t
-	A20A5-02934	制动钢锁总成(右) Cable L. H	1	2-2.5t
23	GB/T5785-2000	螺栓M8×16 Bolt	2	2-2.5t
24	GB/T93-1987	弹垫8 Washer, lock	2	2-2.5t
B	A20A5-02900	制动分泵总成 Wheel cylinder ass'y	1	2-2.5t
25	A20A5-02901	制动分泵缸 Cylinder	1	2-2.5t
26	A20A5-02905	分泵护罩 Cover, dust	2	2-2.5t
27	A20A5-02906	分泵活塞顶杆 Rod, piston	2	2-2.5t
28	A20A5-02902	分泵活塞 Piston	2	2-2.5t
29	A20A5-02903	分泵皮碗 Cup, piston	2	2-2.5t
30	A20A5-02904	分泵弹簧 Spring	1	2-2.5t
31	A20A5-02907	分泵油塞 Plug	1	2-2.5t
32	A20A5-02909	分泵放气螺钉 Screw, breather	1	2-2.5t
33	A20A5-02910	分泵放气螺钉帽 Cap, screw	1	2-2.5t
34	A20A5-02908	螺纹防护罩 Shroud	1	2-2.5t

轮式制动器(3-3.5t)
Wheel brake(3-3.5t)

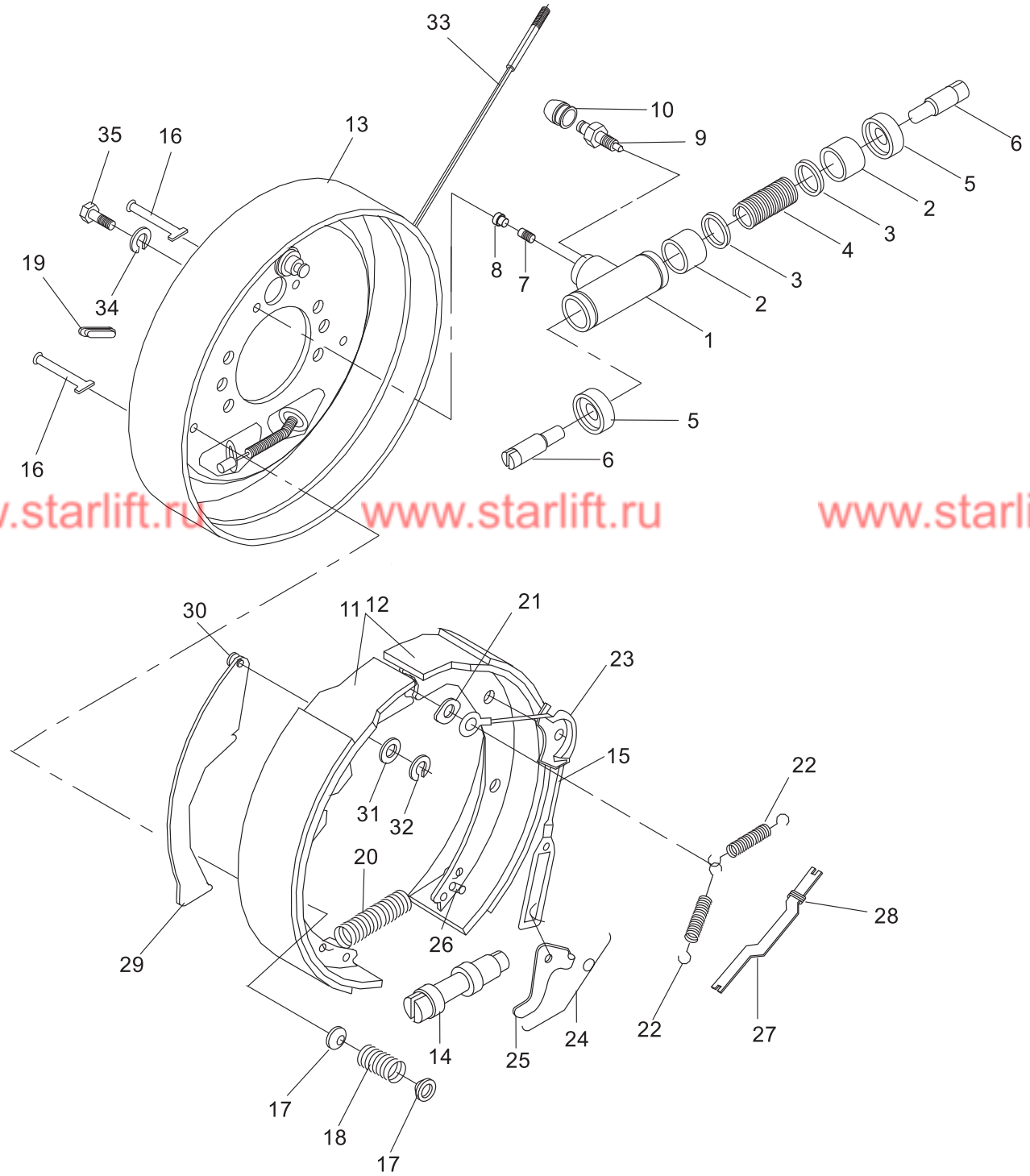


轮式制动器(3-3.5t)

Wheel brake(3-3.5t)

序号 Item	零件号 Part No	零部件名称 Description	数量 Q'ty	备注 Remark
A	A30A5-02800(L)	制动器总成 (左) Wheel brake	1	3t
	A35A5-02200(L)	制动器总成 (左) Wheel brake	1	3.5t
-	A30A5-02800(R)	制动器总成 (右) Wheel brake	1	3t
-	A35A5-02200(R)	制动器总成 (右) Wheel brake	1	3.5t
B	A30A5-02900	制动分泵总成 Wheel cylinder ass'y	1	3t
	A35A5-02300	制动分泵总成 Wheel cylinder ass'y	1	3.5t
1	A30A5-02901	制动分泵缸 Cylinder	1	3t
	A35A5-02301	制动分泵缸 Cylinder	1	3.5t
2	A30A5-02902	分泵活塞 Piston	2	3t
	A35A5-02302	分泵活塞 Piston	2	3.5t
3	A30A5-02903	分泵皮碗 Cup, piston	2	3t
	A35A5-02303	分泵皮碗 Cup, piston	2	3.5t
4	A30A5-02904	分泵弹簧 Spring	1	3t
	A35A5-02304	分泵弹簧 Spring	1	3.5t
5	A30A5-02905	分泵护罩 Cover, dust	2	3t
	A35A5-02305	分泵护罩 Cover, dust	2	3.5t
6	A30A5-02906	分泵活塞顶杆 Rod, piston	2	3t
	A35A5-02306	分泵活塞顶杆 Rod, piston	2	3.5t
7	A30A5-02907	制动分泵活塞 Plug	1	3t
	A35A5-02307	制动分泵活塞 Plug	1	3.5t
8	A30A5-02908	螺纹防护罩 Shroud	1	3t
	A35A5-02308	螺纹防护罩 Shroud	1	3.5t
9	A30A5-02909	分泵放气螺钉 Screw, breather	1	3t
	A35A5-02309	分泵放气螺钉 Screw, breather	1	3.5t
10	A30A5-02910	分泵放气螺钉帽 Cap, screw	1	3t

轮式制动器(3-3.5t)
Wheel brake(3-3.5t)

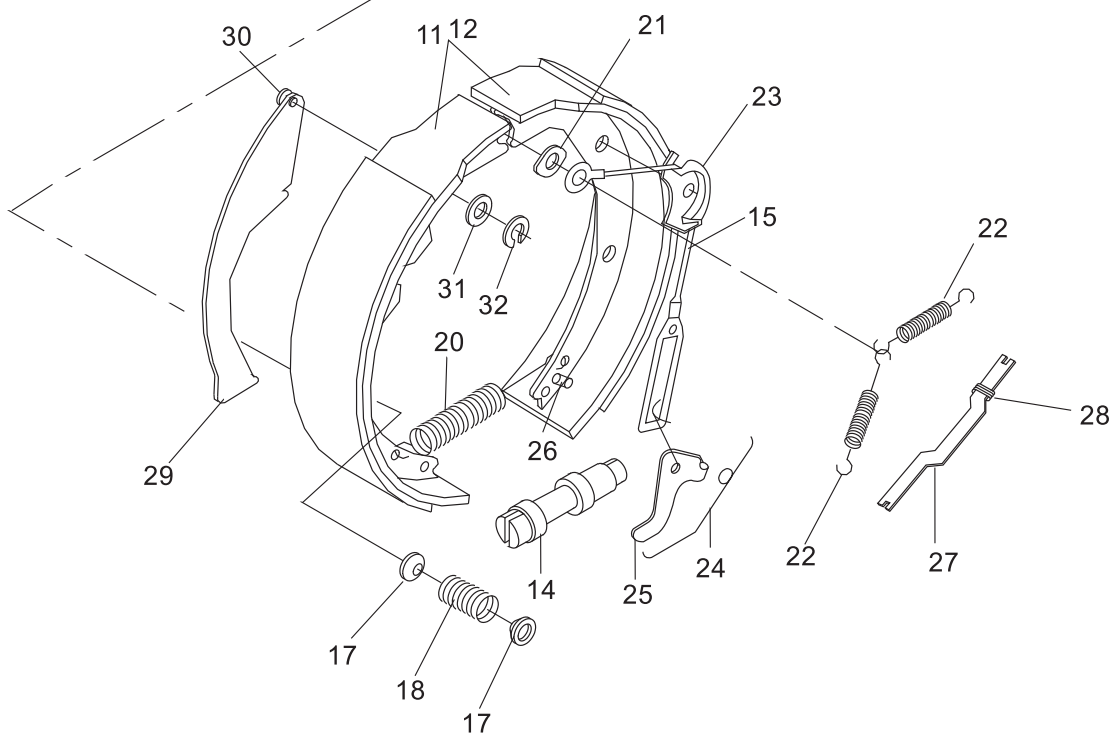
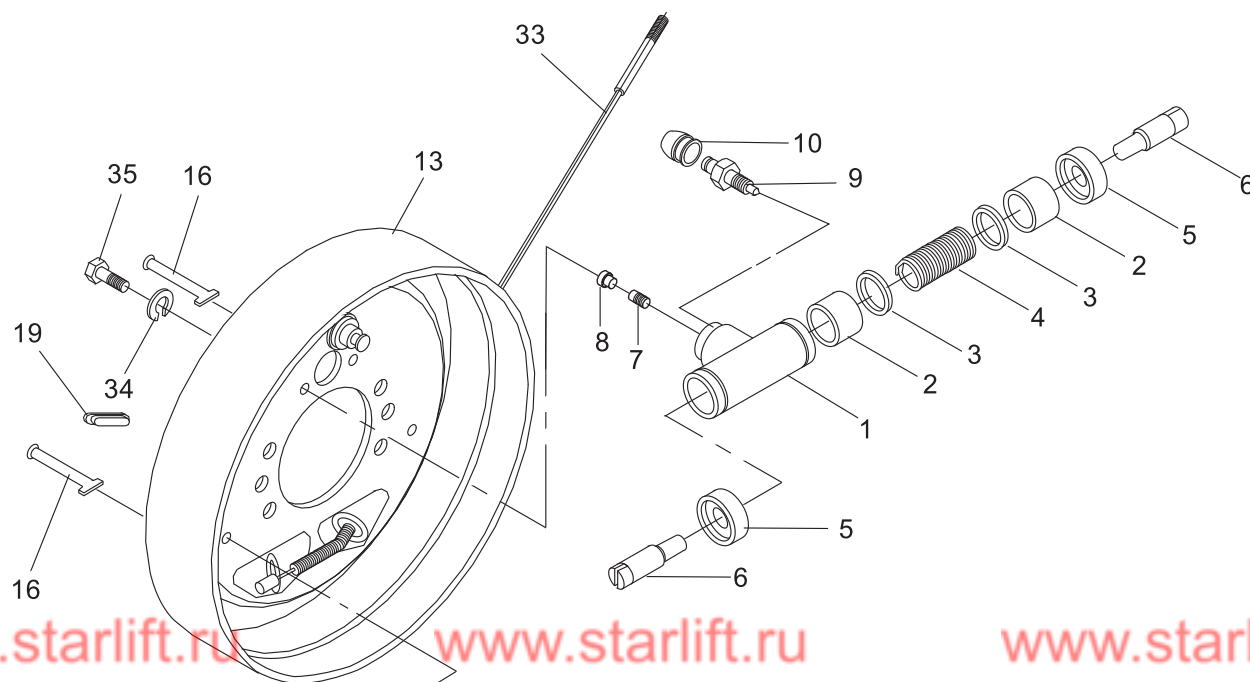


轮式制动器(3-3.5t)

Wheel brake(3-3.5t)

序号 Item	零件号 Part No	零部件名称 Description	数量 Q'ty	备注 Remark
	A35A5-02310	分泵放气螺钉帽 Cap, screw	1	3.5t
11	A30A5-02911	制动蹄带摩擦片总成(前) Pin, shoe & lining ass'y	1	3t
	A35A5-02311	制动蹄带摩擦片总成(前) Pin, shoe & lining ass'y	1	3.5t
12	A30A5-02912	制动蹄带摩擦片总成(后) Pin, shoe & lining ass'y	1	3t
	A35A5-02312	制动蹄带摩擦片总成(后) Pin, shoe & lining ass'y	1	3.5t
13	A30A5-02913	制动器底板总成 Back plate	1	3t
	A35A5-02313	制动器底板总成 Back plate	1	3.5t
14	A30A5-02914	间隙调整 Earance adjuster	1	3t
	A35A5-02314	间隙调整 Earance adjuster	1	3.5t
15	A30A5-02915	弹簧拉线装置 Spring & Fitting ass'y	1	3t
	A35A5-02315	弹簧拉线装置 Spring & Fitting ass'y	1	3.5t
16	A30A5-02916	压簧拉杆 Pin, shoe hold down	2	3t
	A35A5-02316	压簧拉杆 Pin, shoe hold down	2	3.5t
17	A30A5-02917	压簧座 Cup, shoe hold down	4	3t
	A35A5-02317	压簧座 Cup, shoe hold down	4	3.5t
18	A30A5-02918	压簧 Spring, shoe hold down	2	3t
	A35A5-02318	压簧 Spring, shoe hold down	2	3.5t
19	A30A5-02919	胶堵 Cover, adjudsting hole	1	3t
	A35A5-02319	胶堵 Cover, adjudsting hole	1	3.5t
20	A30A5-02920	回位弹簧 Spring shoe	1	3t
	A35A5-02320	回位弹簧 Spring shoe	1	3.5t
21	A30A5-02921	导向板 Guide, plate	1	3t
	A35A5-02321	导向板 Guide, plate	1	3.5t
22	A30A5-02922	制动蹄回位弹簧 Return spring, brake shoe	2	3t

轮式制动器 (3-3.5t) Wheel brake(3-3.5t)



轮式制动器(3-3.5t)

Wheel brake(3-3.5t)

序号 Item	零件号 Part No	零部件名称 Description	数量 Q'ty	备注 Remark
	A35A5-02322	制动蹄回位弹簧Return spring, brake shoe	2	3.5t
23	A30A5-02923	导向块 Guide, cable	1	3t
	A35A5-02323	导向块 Guide, cable	1	3.5t
24	A30A5-02924	弹簧 Spring	1	3t
	A35A5-02324	弹簧 Spring	1	3.5t
25	A30A5-02925	棘爪 Level	1	3t
	A35A5-02325	棘爪 Level	1	3.5t
26	A30A5-02926	销钉 Pin	1	3t
	A35A5-02326	销钉 Pin	1	3.5t
27	A30A5-02927	手制动推杆 Strut L. H.	1	3t
	A35A5-02327	手制动推杆 Strut L. H.	1	3.5t
28	A30A5-02928	弹簧 Spring	1	3t
	A35A5-02328	弹簧 Spring	1	3-3.5t
29	A30A5-02929	手制动拉杆 Rod	1	3t
	A35A5-02329	手制动拉杆 Rod	1	3.5t
30	A30A5-02930	销钉 Pin	1	3t
	A35A5-02330	销钉 Pin	1	3.5t
31	A30A5-02931	弹性垫片 Washer, spring	1	3t
	A35A5-02331	弹性垫片 Washer, spring	1	3.5t
32	A30A5-02932	杆销挡圈 Snap, ring, pin axle	1	3t
	A35A5-02332	杆销挡圈 Snap, ring, pin axle	1	3.5t
33	A30A5-02933	制动钢锁总成(左) Cable L. H	1	3t
	A35A5-02333	制动钢锁总成(左) Cable L. H	1	3.5t
-	A30A5-02934	制动钢锁总成(右) Cable L. H	1	3t
-	A35A5-02334	制动钢锁总成(右) Cable L. H	1	3.5t
34	GB/T93-1987	弹垫8 Washer	2	
35	GB/T5785-2000	螺栓M8×1.25×20 Bolt	2	